

## Product datasheet for **TA383807**

### **Bcl2 Binding component 3 (BBC3) Rabbit Monoclonal Antibody [Clone ID: R05-9C7]**

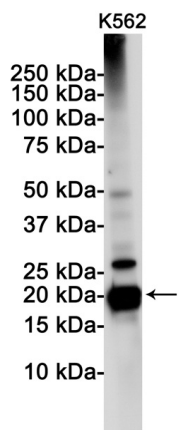
#### **Product data:**

<b>Product Type:</b>	Primary Antibodies
<b>Clone Name:</b>	R05-9C7
<b>Applications:</b>	IF, IHC, WB
<b>Recommended Dilution:</b>	WB: 1/1000 IHC: 1/20-1/100 ICC/IF: 1/50-1/100
<b>Reactivity:</b>	Human, Mouse, Rat
<b>Host:</b>	Rabbit
<b>Isotype:</b>	IgG
<b>Clonality:</b>	Monoclonal
<b>Immunogen:</b>	A synthetic peptide of human PUMA
<b>Formulation:</b>	50mM Tris-Glycine(pH 7.4), 0.15M NaCl, 40% Glycerol, 0.01% Sodium azide and 0.05% BSA
<b>Concentration:</b>	lot specific
<b>Purification:</b>	Affinity Purified
<b>Conjugation:</b>	Unconjugated
<b>Storage:</b>	Store at 4°C short term. Aliquot and store at -20°C long term. Avoid freeze/thaw cycles.
<b>Stability:</b>	1 year
<b>Predicted Protein Size:</b>	Calculated MW: 21 kDa; Observed MW: 21 kDa
<b>Gene Name:</b>	BCL2 binding component 3
<b>Database Link:</b>	<a href="#">Entrez Gene 27113 Human Q9BXH1</a>
<b>Background:</b>	Swiss-Prot Acc.Q9BXH1.Essential mediator of p53/TP53-dependent and p53/TP53-independent apoptosis (PubMed:11463391). Functions by promoting partial unfolding of BCL2L1 and dissociation of BCL2L1 from p53/TP53. Regulates ER stress-induced neuronal apoptosis (PubMed:23340338).
<b>Synonyms:</b>	FLJ42994; JFY-1; JFY1; PUMA

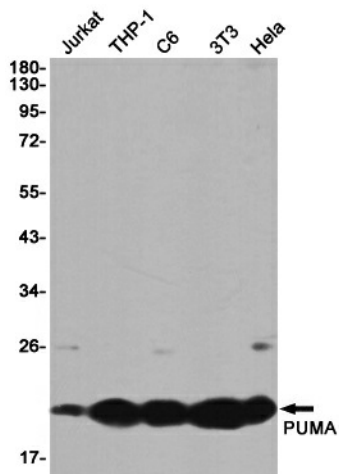


[View online »](#)

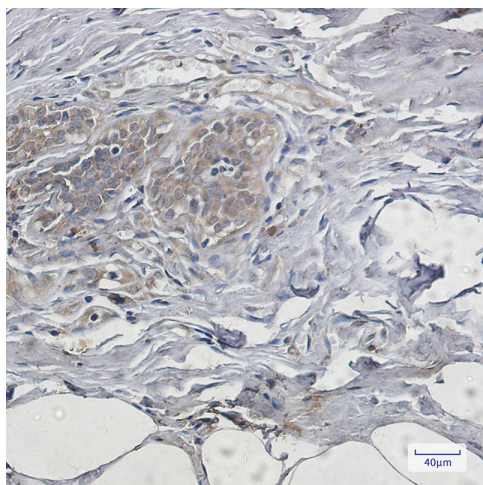
Product images:



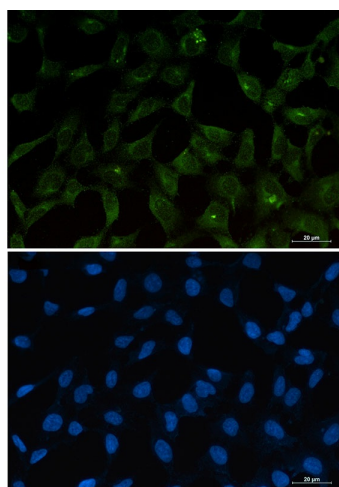
Western blot analysis of PUMA in K562 lysates using PUMA antibody.



Western blot analysis of PUMA in Jurkat, THP-1, C6, 3T3, HeLa lysates using PUMA antibody



Immunohistochemistry analysis of paraffin-embedded Human breast cancer using PUMA antibody. High-pressure and temperature Sodium Citrate pH 6.0 was used for antigen retrieval.



Immunocytochemistry analysis of PUMA (green) in 293T using PUMA antibody, and DAPI (blue).