

## Product datasheet for **TA383806S**

### **BAX Rabbit Monoclonal Antibody [Clone ID: R06-5F2]**

#### **Product data:**

Product Type:	Primary Antibodies
Clone Name:	R06-5F2
Applications:	IP, WB
Recommended Dilution:	WB: 1/1000 IP: 1/20
Reactivity:	Human, Mouse, Rat
Host:	Rabbit
Isotype:	IgG
Clonality:	Monoclonal
Immunogen:	A synthetic peptide of human Bax
Formulation:	50mM Tris-Glycine(pH 7.4), 0.15M NaCl, 40% Glycerol, 0.01% Sodium azide and 0.05% BSA
Concentration:	lot specific
Purification:	Affinity Purified
Conjugation:	Unconjugated
Storage:	Store at 4°C short term. Aliquot and store at -20°C long term. Avoid freeze/thaw cycles.
Stability:	1 year
Predicted Protein Size:	Calculated MW: 21 kDa; Observed MW: 21 kDa
Gene Name:	BCL2 associated X protein
Database Link:	<a href="#">Entrez Gene 581 Human Q07812</a>

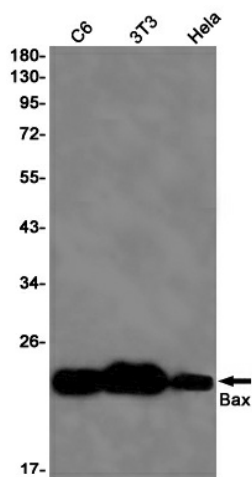
**Background:** Swiss-Prot Acc.Q07812.Plays a role in the mitochondrial apoptotic process. Under normal conditions, BAX is largely cytosolic via constant retrotranslocation from mitochondria to the cytosol mediated by BCL2L1/Bcl-xL, which avoids accumulation of toxic BAX levels at the mitochondrial outer membrane (MOM) (PubMed:21458670). Under stress conditions, undergoes a conformation change that causes translocation to the mitochondrion membrane, leading to the release of cytochrome c that then triggers apoptosis. Promotes activation of CASP3, and thereby apoptosis.



[View online »](#)

Synonyms: Bcl2-L-4; BCL2L4

### Product images:



Western blot analysis of Bax in C6, 3T3, HeLa lysates using Bax antibody.