

## Product datasheet for **TA383805S**

### **BAX Rabbit Monoclonal Antibody [Clone ID: R03-1D3]**

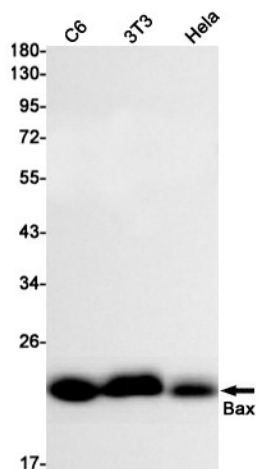
#### **Product data:**

Product Type:	Primary Antibodies
Clone Name:	R03-1D3
Applications:	IHC, IP, WB
Recommended Dilution:	WB: 1/1000 IHC: 1/20-1/500 IP: 1/20
Reactivity:	Human, Mouse, Rat
Host:	Rabbit
Isotype:	IgG
Clonality:	Monoclonal
Immunogen:	A synthetic peptide of human Bax
Formulation:	50mM Tris-Glycine(pH 7.4), 0.15M NaCl, 40% Glycerol, 0.01% Sodium azide and 0.05% BSA
Concentration:	lot specific
Purification:	Affinity Purified
Conjugation:	Unconjugated
Storage:	Store at 4°C short term. Aliquot and store at -20°C long term. Avoid freeze/thaw cycles.
Stability:	1 year
Predicted Protein Size:	Calculated MW: 21 kDa; Observed MW: 20 kDa
Gene Name:	BCL2 associated X protein
Database Link:	<a href="#">Entrez Gene 581 Human Q07812</a>
Background:	Swiss-Prot Acc.Q07812.
Synonyms:	Bcl2-L-4; BCL2L4

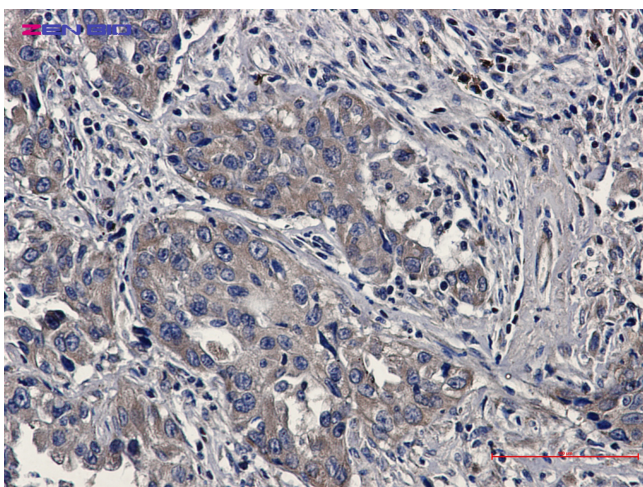


[View online »](#)

## Product images:



Western blot detection of Bax in C6,3T3,HeLa cell lysates using Bax Rabbit mAb(1:1000 diluted).Predicted band size:21kDa.Observed band size:20kDa.



Immunohistochemistry of Bax in paraffin-embedded Human lung cancer tissue using Bax Rabbit mAb at dilution 1/20