

Product datasheet for **TA383804**

Bak (BAK1) Rabbit Monoclonal Antibody [Clone ID: R03-6A8]

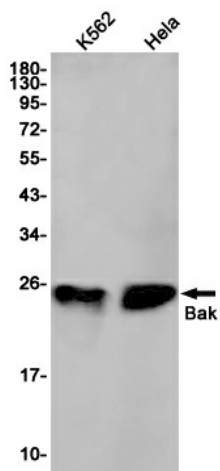
Product data:

Product Type:	Primary Antibodies
Clone Name:	R03-6A8
Applications:	IHC, IP, WB
Recommended Dilution:	WB: 1/1000 IHC: 1/20 IP: 1/20
Reactivity:	Human
Host:	Rabbit
Isotype:	IgG
Clonality:	Monoclonal
Immunogen:	A synthetic peptide of human Bak
Formulation:	50mM Tris-Glycine(pH 7.4), 0.15M NaCl, 40% Glycerol, 0.01% Sodium azide and 0.05% BSA
Concentration:	lot specific
Purification:	Affinity Purified
Conjugation:	Unconjugated
Storage:	Store at 4°C short term. Aliquot and store at -20°C long term. Avoid freeze/thaw cycles.
Stability:	1 year
Predicted Protein Size:	Calculated MW: 23 kDa; Observed MW: 23 kDa
Gene Name:	BCL2 antagonist/killer 1
Database Link:	Entrez Gene 578 Human Q16611
Background:	Swiss-Prot Acc.Q16611.Plays a role in the mitochondrial apoptotic process. Upon arrival of cell death signals, promotes mitochondrial outer membrane (MOM) permeabilization by oligomerizing to form pores within the MOM. This releases apoptogenic factors into the cytosol, including cytochrome c, promoting the activation of caspase 9 which in turn processes and activates the effector caspases.
Synonyms:	BAK; BAK-LIKE; Bcl2-L-7; BCL2L7; CDN1; MGC3887; MGC117255

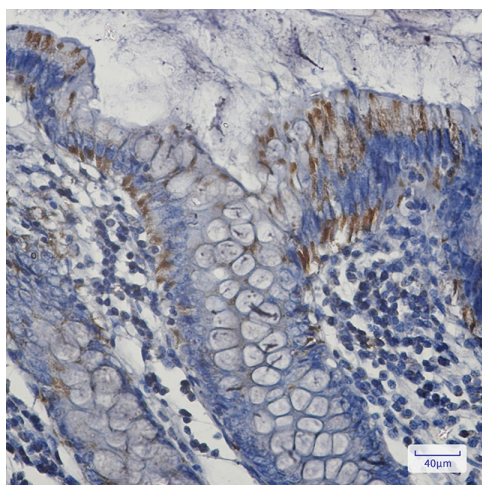


[View online »](#)

Product images:



Western blot analysis of Bak in K562, HeLa lysates using Bak antibody.



Immunohistochemistry analysis of paraffin-embedded Human colon cancer using Bak antibody. High-pressure and temperature Sodium Citrate pH 6.0 was used for antigen retrieval.