

## Product datasheet for **TA383799M**

### **BAD Rabbit Monoclonal Antibody [Clone ID: R07-1B6]**

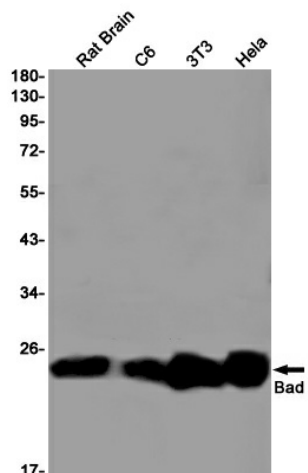
#### **Product data:**

Product Type:	Primary Antibodies
Clone Name:	R07-1B6
Applications:	IF, IHC, IP, WB
Recommended Dilution:	WB: 1/1000 IHC: 1/50 ICC/IF: 1/50 IP: 1/20
Reactivity:	Human, Mouse, Rat
Host:	Rabbit
Isotype:	IgG
Clonality:	Monoclonal
Immunogen:	A synthetic peptide of human Bad
Formulation:	50mM Tris-Glycine(pH 7.4), 0.15M NaCl, 40% Glycerol, 0.01% Sodium azide and 0.05% BSA
Concentration:	lot specific
Purification:	Affinity Purified
Conjugation:	Unconjugated
Storage:	Store at 4°C short term. Aliquot and store at -20°C long term. Avoid freeze/thaw cycles.
Stability:	1 year
Predicted Protein Size:	Calculated MW: 18 kDa; Observed MW: 23 kDa
Gene Name:	BCL2 associated agonist of cell death
Database Link:	<a href="#">Entrez Gene 572 Human Q92934</a>
Background:	Swiss-Prot Acc.Q92934.Promotes cell death. Successfully competes for the binding to Bcl-X(L), Bcl-2 and Bcl-W, thereby affecting the level of heterodimerization of these proteins with BAX. Can reverse the death repressor activity of Bcl-X(L), but not that of Bcl-2 . Appears to act as a link between growth factor receptor signaling and the apoptotic pathways.
Synonyms:	BBC2; BBC6; Bcl2-L-8; BCL2L8

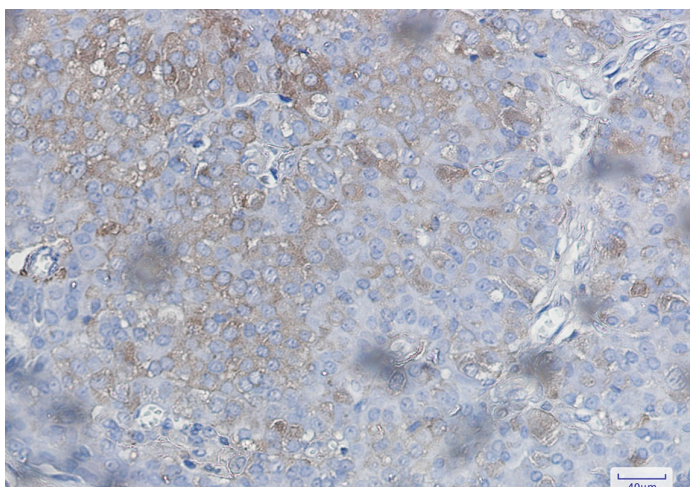


[View online »](#)

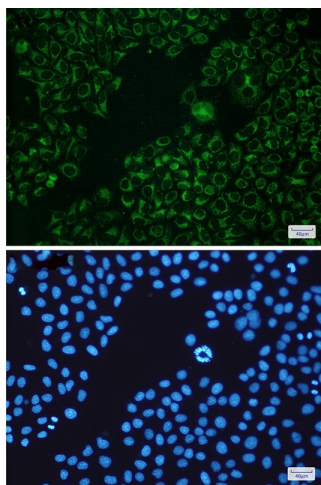
## Product images:



Western blot analysis of Bad in rat Brain, C6, 3T3, HeLa lysates using Bad antibody.



Immunohistochemistry analysis of paraffin-embedded Human breast cancer using Bad antibody. High-pressure and temperature Sodium Citrate pH 6.0 was used for antigen retrieval.



Immunocytochemistry analysis of Bad(green) in Hela using Bad antibody, and DAPI(blue)