

Product datasheet for **TA383798**

BAD Rabbit Polyclonal Antibody

Product data:

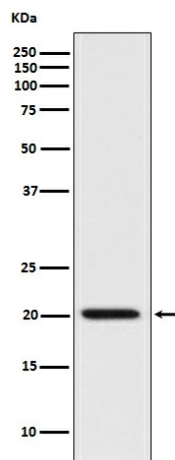
Product Type:	Primary Antibodies
Applications:	FC, IF, IHC, IP, WB
Recommended Dilution:	WB: 1/1000-1/2000 IHC: 1/50-1/200 ICC/IF: 1/50-1/200 IP: 1/30 FC: 1/50
Reactivity:	Human, Mouse, Rat
Host:	Rabbit
Isotype:	IgG
Clonality:	Polyclonal
Immunogen:	A synthesized peptide derived from human Bad
Formulation:	Rabbit IgG in phosphate buffered saline , pH 7.4, 150mM NaCl, 0.02% sodium azide and 50% glycerol.
Concentration:	lot specific
Purification:	Affinity Chromatography
Conjugation:	Unconjugated
Storage:	Store at 4°C short term. Aliquot and store at -20°C long term. Avoid freeze/thaw cycles.
Stability:	1 year
Predicted Protein Size:	23kDa
Gene Name:	BCL2 associated agonist of cell death
Database Link:	Entrez Gene 572 Human Q92934
Background:	Swiss-Prot Acc.Q92934.Promotes cell death. Successfully competes for the binding to Bcl-X(L), Bcl-2 and Bcl-W, thereby affecting the level of heterodimerization of these proteins with BAX. Can reverse the death repressor activity of Bcl-X(L), but not that of Bcl-2 (By similarity). Appears to act as a link between growth factor receptor signaling and the apoptotic pathways.



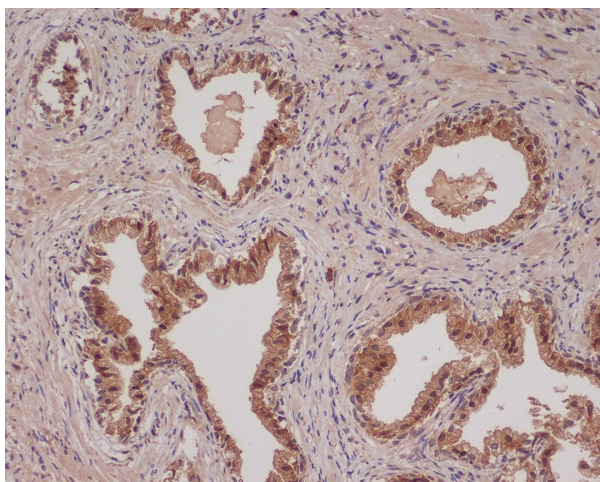
[View online »](#)

Synonyms: BBC2; BBC6; Bcl2-L-8; BCL2L8

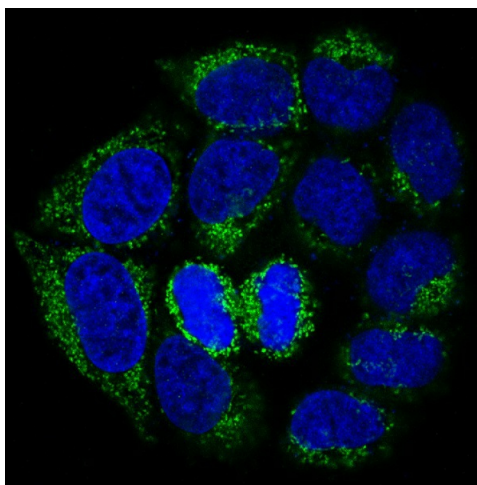
Product images:



Western blot analysis of BAD in HeLa lysates using Bad antibody.



Immunohistochemistry analysis of paraffin-embedded Human colon cancer using Bad antibody. High-pressure and temperature Sodium Citrate pH 6.0 was used for antigen retrieval.



Immunofluorescence analysis of Bad in HeLa using Bad antibody.