

## Product datasheet for **TA383797**

### **B4GALT5 Rabbit Polyclonal Antibody**

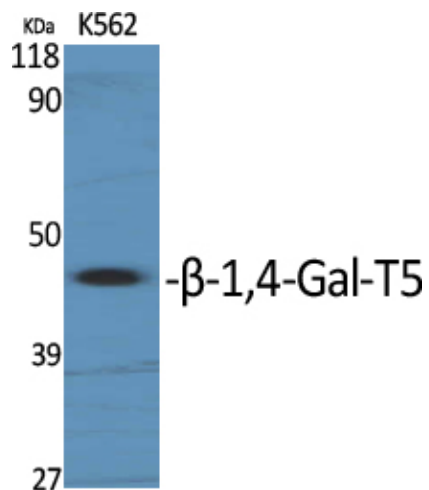
#### **Product data:**

Product Type:	Primary Antibodies
Applications:	ELISA, WB
Recommended Dilution:	WB: 1/500-1/2000 ELISA: 1/10000
Reactivity:	Human, Mouse
Host:	Rabbit
Isotype:	IgG
Clonality:	Polyclonal
Immunogen:	The antiserum was produced against synthesized peptide derived from human B4GALT5. AA range:321-370
Formulation:	Liquid in PBS containing 50% glycerol, 0.5% BSA and 0.02% sodium azide, pH 7.3.
Concentration:	lot specific
Purification:	Affinity Purified
Conjugation:	Unconjugated
Storage:	Store at 4°C short term. Aliquot and store at -20°C long term. Avoid freeze/thaw cycles.
Stability:	1 year
Predicted Protein Size:	Observed MW (kDa):40
Database Link:	<a href="#">O43286</a>
Background:	Swiss-Prot Acc.O43286.

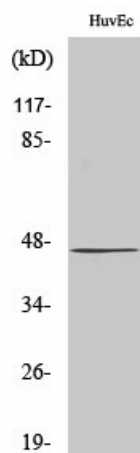


[View online »](#)

## Product images:



Western blot analysis of B4GALT5 in various lysates using B4GALT5 antibody.



Western blot analysis of B4GALT5 in 293 lysates using  $\beta$ 1,4GalT5 antibody.