

## Product datasheet for **TA383794M**

### beta 2 Microglobulin (B2M) Rabbit Monoclonal Antibody [Clone ID: R01-4H5]

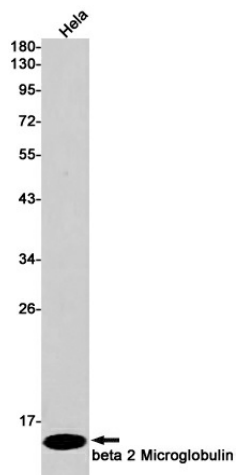
#### Product data:

Product Type:	Primary Antibodies
Clone Name:	R01-4H5
Applications:	IHC, IP, WB
Recommended Dilution:	WB: 1/1000 IHC: 1/200 IP: 1/20
Reactivity:	Human, Mouse
Host:	Rabbit
Isotype:	IgG
Clonality:	Monoclonal
Immunogen:	Recombinant protein of human beta 2 Microglobulin
Formulation:	50mM Tris-Glycine(pH 7.4), 0.15M NaCl, 40% Glycerol, 0.01% Sodium azide and 0.05% BSA
Concentration:	lot specific
Purification:	Affinity Purified
Conjugation:	Unconjugated
Storage:	Store at 4°C short term. Aliquot and store at -20°C long term. Avoid freeze/thaw cycles.
Stability:	1 year
Predicted Protein Size:	Calculated MW: 14 kDa; Observed MW: 14 kDa
Gene Name:	beta-2-microglobulin
Database Link:	<a href="#">Entrez Gene 567 Human P61769</a>
Background:	Swiss-Prot Acc.P61769.Component of the class I major histocompatibility complex (MHC). Involved in the presentation of peptide antigens to the immune system. Exogenously applied M.tuberculosis EsxA or EsxA-EsxB (or EsxA expressed in host) binds B2M and decreases its export to the cell surface (total protein levels do not change), probably leading to defects in class I antigen presentation (PubMed:25356553).
Synonyms:	beta-2-microglobin; beta-2-microglobulin

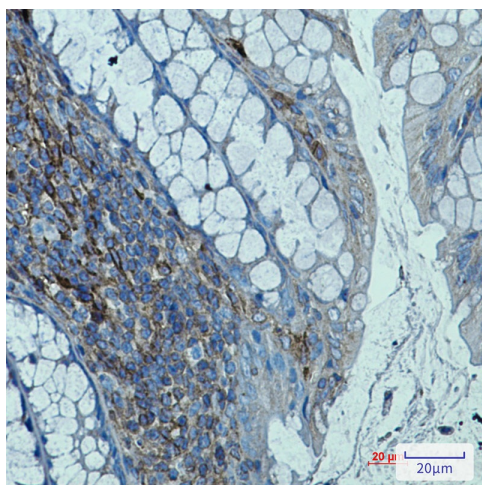


[View online »](#)

## Product images:



Western blot analysis of beta 2 Microglobulin in HeLa lysates using beta 2 Microglobulin antibody.



Immunohistochemistry analysis of paraffin-embedded mouse colon using beta 2 Microglobulin antibody. High-pressure and temperature Sodium Citrate pH 6.0 was used for antigen retrieval.