

Product datasheet for **TA383793**

Axin 2 (AXIN2) Rabbit Polyclonal Antibody

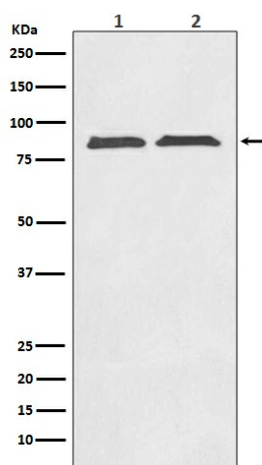
Product data:

Product Type:	Primary Antibodies
Applications:	IF, IHC, WB
Recommended Dilution:	WB: 1/500-1/2000 IHC: 1/50-1/200 ICC/IF: 1/50-1/200
Reactivity:	Human, Mouse, Rat
Host:	Rabbit
Isotype:	IgG
Clonality:	Polyclonal
Immunogen:	A synthesized peptide derived from human Axin2
Formulation:	Rabbit IgG in phosphate buffered saline , pH 7.4, 150mM NaCl, 0.02% sodium azide and 50% glycerol.
Concentration:	lot specific
Purification:	Affinity Chromatography
Conjugation:	Unconjugated
Storage:	Store at 4°C short term. Aliquot and store at -20°C long term. Avoid freeze/thaw cycles.
Stability:	1 year
Predicted Protein Size:	94kDa
Gene Name:	axin 2
Database Link:	Entrez Gene 8313 Human Q9Y2T1
Background:	Swiss-Prot Acc.Q9Y2T1.Axin1 (Axis inhibition protein 1) and Axin2 are multidomain scaffold proteins that negatively regulate Wnt signaling. Axin1 interacts with APC, GSK-3 β , Dvl, and β -catenin and promotes the GSK-3 β -mediated phosphorylation and subsequent degradation of β -catenin .Down-regulates beta-catenin.
Synonyms:	AXIL; Conductin; DKFZp781B0869; MGC10366; MGC126582



[View online »](#)

Product images:



Western blot analysis of Axin2 in (1) SW480 lysates; (2) PC-12 lysates using Axin 2 antibody.