

## Product datasheet for **TA383791M**

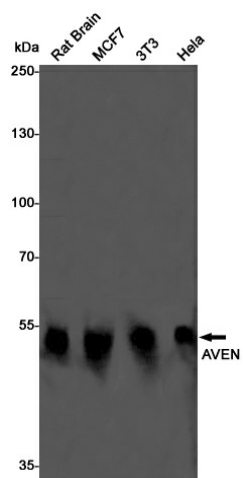
### AVEN Rabbit Monoclonal Antibody [Clone ID: R06-7A9]

#### Product data:

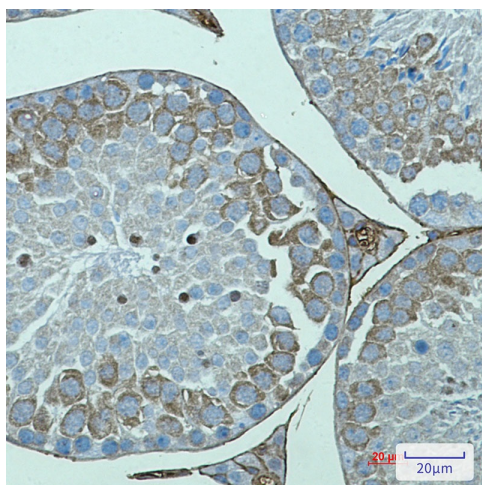
Product Type:	Primary Antibodies
Clone Name:	R06-7A9
Applications:	IHC, WB
Recommended Dilution:	WB: 1/1000-1/5000 IHC: 1/20-1/50
Reactivity:	Human, Mouse, Rat
Host:	Rabbit
Isotype:	IgG
Clonality:	Monoclonal
Immunogen:	A synthetic peptide of human AVEN
Formulation:	50mM Tris-Glycine(pH 7.4), 0.15M NaCl, 40% Glycerol, 0.01% Sodium azide and 0.05% BSA
Concentration:	lot specific
Purification:	Affinity Purified
Conjugation:	Unconjugated
Storage:	Store at 4°C short term. Aliquot and store at -20°C long term. Avoid freeze/thaw cycles.
Stability:	1 year
Predicted Protein Size:	Calculated MW: 39 kDa; Observed MW: 50 kDa
Gene Name:	apoptosis and caspase activation inhibitor
Database Link:	<a href="#">Entrez Gene 57099 Human Q9NQS1</a>
Background:	Swiss-Prot Acc.Q9NQS1.Protects against apoptosis mediated by Apaf-1.
Synonyms:	PDCD12

[View online »](#)

## Product images:



Western blot analysis of AVEN in rat Brain, MCF-7, 3T3, HeLa lysates using AVEN antibody.



Immunohistochemistry analysis of paraffin-embedded mouse testis using AVEN antibody. High-pressure and temperature Sodium Citrate pH 6.0 was used for antigen retrieval.