

Product datasheet for **TA383787S**

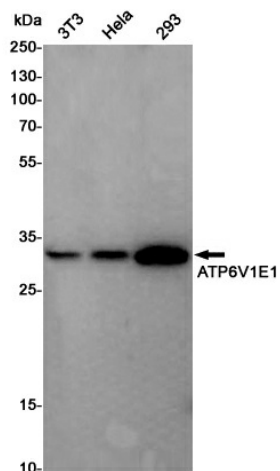
ATP6V1E1 Rabbit Polyclonal Antibody

Product data:

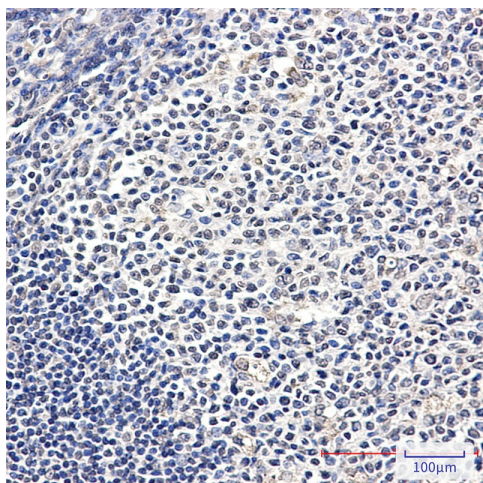
Product Type:	Primary Antibodies
Applications:	FC, IF, IHC, IP, WB
Recommended Dilution:	WB: 1/1000 IHC: 1/50 ICC/IF: 1/20 FC: 1/20 IP: 1/20
Reactivity:	Human, Mouse
Host:	Rabbit
Isotype:	IgG
Clonality:	Polyclonal
Immunogen:	Recombinant protein of human ATP6V1E1
Formulation:	50mM Tris-Glycine(pH 7.4), 0.15M NaCl, 40% Glycerol, 0.01% Sodium azide and 0.05% BSA
Concentration:	lot specific
Purification:	Affinity Purified
Conjugation:	Unconjugated
Storage:	Store at 4°C short term. Aliquot and store at -20°C long term. Avoid freeze/thaw cycles.
Stability:	1 year
Predicted Protein Size:	Calculated MW: 26 kDa; Observed MW: 26 kDa
Gene Name:	ATPase H ⁺ transporting V1 subunit E1
Database Link:	Entrez Gene 529 Human P36543
Background:	Swiss-Prot Acc.P36543.
Synonyms:	ATP6E; ATP6E2; ATP6V1E; P31; Vma4



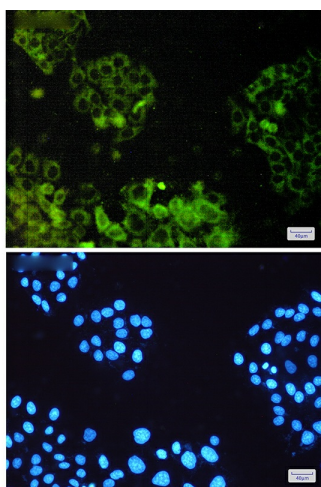
[View online »](#)

Product images:

Western blot analysis of ATP6V1E1 in 3T3, HeLa, 293 lysates using ATP6V1E1 antibody.



Immunohistochemistry analysis of paraffin-embedded Human tonsil using ATP6V1E1 antibody. High-pressure and temperature Sodium Citrate pH 6.0 was used for antigen retrieval.



Immunocytochemistry analysis of ATP6V1E1(green) in HeLa using ATP6V1E1 antibody, and DAPI(blue)