

Product datasheet for **TA383784**

ATP5F1B Rabbit Polyclonal Antibody

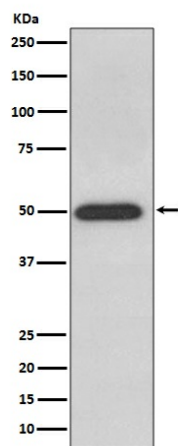
Product data:

Product Type:	Primary Antibodies
Applications:	IF, IHC, IP, WB
Recommended Dilution:	WB: 1/500-1/2000 IHC: 1/50-1/200 ICC/IF: 1/50-1/200 IP: 1/50
Reactivity:	Human, Mouse, Rat
Host:	Rabbit
Isotype:	IgG
Clonality:	Polyclonal
Immunogen:	A synthesized peptide derived from human ATPB
Formulation:	Rabbit IgG in phosphate buffered saline , pH 7.4, 150mM NaCl, 0.02% sodium azide and 50% glycerol.
Concentration:	lot specific
Purification:	Affinity Chromatography
Conjugation:	Unconjugated
Storage:	Store at 4°C short term. Aliquot and store at -20°C long term. Avoid freeze/thaw cycles.
Stability:	1 year
Predicted Protein Size:	50kDa
Gene Name:	ATP synthase, H ⁺ transporting, mitochondrial F1 complex, beta polypeptide
Database Link:	Entrez Gene 506 Human P06576
Background:	Swiss-Prot Acc.P06576.Rotation of the central stalk against the surrounding alpha(3)beta(3) subunits leads to hydrolysis of ATP in three separate catalytic sites on the beta subunits.
Synonyms:	ATPMB; ATPSB; MGC5231



[View online »](#)

Product images:



Western blot analysis of ATPB in HeLa lysates using ATPB antibody.