

Product datasheet for **TA383781M**

beta 1 Sodium Potassium ATPase (ATP1B1) Rabbit Monoclonal Antibody [Clone ID: R02-8B6]

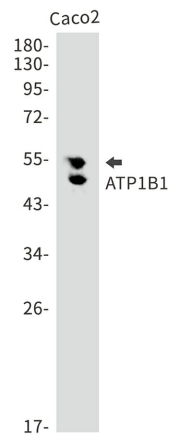
Product data:

Product Type:	Primary Antibodies
Clone Name:	R02-8B6
Applications:	IHC, WB
Recommended Dilution:	WB: 1/1000-1/5000 IHC: 1/20-1/50
Reactivity:	Human, Rat
Host:	Rabbit
Isotype:	IgG
Clonality:	Monoclonal
Immunogen:	A synthetic peptide of human ATP1B1
Formulation:	50mM Tris-Glycine(pH 7.4), 0.15M NaCl, 40% Glycerol, 0.01% Sodium azide and 0.05% BSA
Concentration:	lot specific
Purification:	Affinity Purified
Conjugation:	Unconjugated
Storage:	Store at 4°C short term. Aliquot and store at -20°C long term. Avoid freeze/thaw cycles.
Stability:	1 year
Predicted Protein Size:	Calculated MW: 35 kDa; Observed MW: 45-55 kDa
Gene Name:	ATPase Na ⁺ /K ⁺ transporting subunit beta 1
Database Link:	Entrez Gene 481 Human P05026
Background:	Swiss-Prot Acc.P05026.This is the non-catalytic component of the active enzyme, which catalyzes the hydrolysis of ATP coupled with the exchange of Na ⁺ and K ⁺ ions across the plasma membrane. The beta subunit regulates, through assembly of alpha/beta heterodimers, the number of sodium pumps transported to the plasma membrane.
Synonyms:	adenosinetriphosphatase; ATP1B; MGC1798; OTTHUMP00000032538

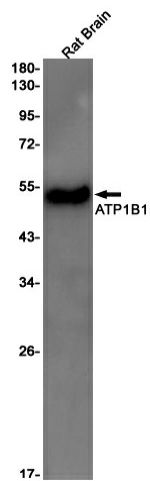


[View online »](#)

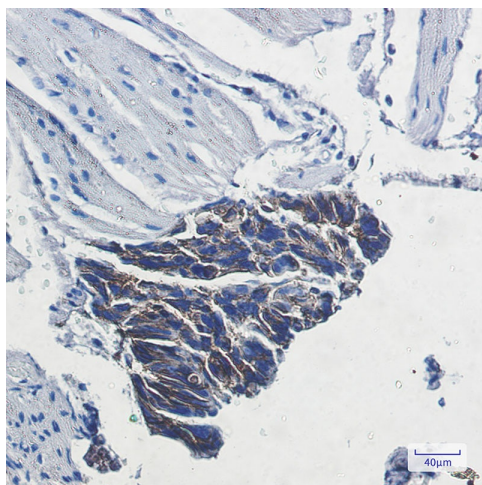
Product images:



Western blot analysis of ATP1B1 in Caco2 lysates using ATP1B1 antibody.



Western blot analysis of ATP1B1 in rat Brain lysates using ATP1B1 antibody.



Immunohistochemistry analysis of paraffin-embedded Human colon cancer using ATP1B1 antibody. High-pressure and temperature Sodium Citrate pH 6.0 was used for antigen retrieval.