

## Product datasheet for **TA383781**

### **beta 1 Sodium Potassium ATPase (ATP1B1) Rabbit Monoclonal Antibody [Clone ID: R02-8B6]**

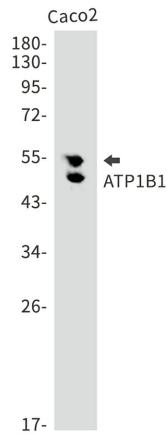
#### **Product data:**

<b>Product Type:</b>	Primary Antibodies
<b>Clone Name:</b>	R02-8B6
<b>Applications:</b>	IHC, WB
<b>Recommended Dilution:</b>	WB: 1/1000-1/5000 IHC: 1/20-1/50
<b>Reactivity:</b>	Human, Rat
<b>Host:</b>	Rabbit
<b>Isotype:</b>	IgG
<b>Clonality:</b>	Monoclonal
<b>Immunogen:</b>	A synthetic peptide of human ATP1B1
<b>Formulation:</b>	50mM Tris-Glycine(pH 7.4), 0.15M NaCl, 40% Glycerol, 0.01% Sodium azide and 0.05% BSA
<b>Concentration:</b>	lot specific
<b>Purification:</b>	Affinity Purified
<b>Conjugation:</b>	Unconjugated
<b>Storage:</b>	Store at 4°C short term. Aliquot and store at -20°C long term. Avoid freeze/thaw cycles.
<b>Stability:</b>	1 year
<b>Predicted Protein Size:</b>	Calculated MW: 35 kDa; Observed MW: 45-55 kDa
<b>Gene Name:</b>	ATPase Na <sup>+</sup> /K <sup>+</sup> transporting subunit beta 1
<b>Database Link:</b>	<a href="#">Entrez Gene 481 Human P05026</a>
<b>Background:</b>	Swiss-Prot Acc.P05026.This is the non-catalytic component of the active enzyme, which catalyzes the hydrolysis of ATP coupled with the exchange of Na <sup>+</sup> and K <sup>+</sup> ions across the plasma membrane. The beta subunit regulates, through assembly of alpha/beta heterodimers, the number of sodium pumps transported to the plasma membrane.
<b>Synonyms:</b>	adenosinetriphosphatase; ATP1B; MGC1798; OTTHUMP00000032538

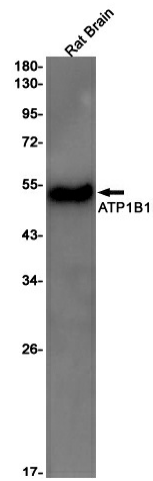


[View online »](#)

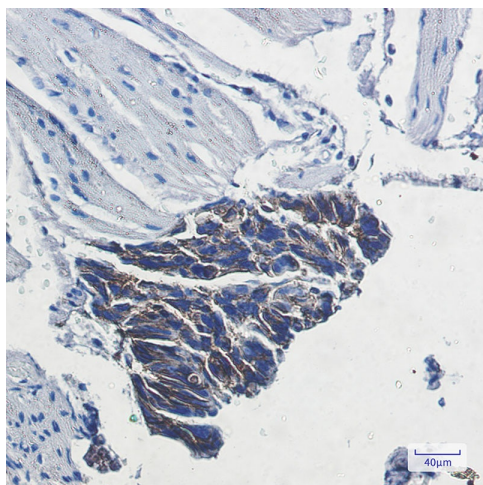
**Product images:**



Western blot analysis of ATP1B1 in Caco2 lysates using ATP1B1 antibody.



Western blot analysis of ATP1B1 in rat Brain lysates using ATP1B1 antibody.



Immunohistochemistry analysis of paraffin-embedded Human colon cancer using ATP1B1 antibody. High-pressure and temperature Sodium Citrate pH 6.0 was used for antigen retrieval.