

## Product datasheet for **TA383773**

### ATG7 Rabbit Polyclonal Antibody

#### Product data:

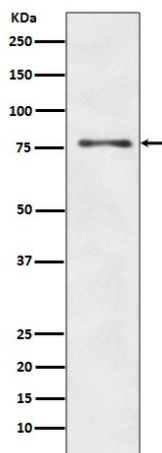
Product Type:	Primary Antibodies
Applications:	FC, IF, IHC, IP, WB
Recommended Dilution:	WB: 1/10000-1/50000 IHC: 1/50-1/200 ICC/IF: 1/50-1/200 IP: 1/20 FC: 1/20
Reactivity:	Human
Host:	Rabbit
Isotype:	IgG
Clonality:	Polyclonal
Immunogen:	A synthesized peptide derived from human ATG7
Formulation:	Rabbit IgG in phosphate buffered saline , pH 7.4, 150mM NaCl, 0.02% sodium azide and 50% glycerol.
Concentration:	lot specific
Purification:	Affinity Chromatography
Conjugation:	Unconjugated
Storage:	Store at 4°C short term. Aliquot and store at -20°C long term. Avoid freeze/thaw cycles.
Stability:	1 year
Predicted Protein Size:	78kDa
Gene Name:	autophagy related 7
Database Link:	<a href="#">Entrez Gene 10533 Human O95352</a>
Background:	Swiss-Prot Acc.O95352.The molecular machinery of autophagy was largely discovered in yeast and referred to as autophagy-related (Atg) genes. Formation of the autophagosome involves a ubiquitin-like conjugation system in which Atg12 is covalently bound to Atg5 and targeted to autophagosome vesicles. This conjugation reaction is mediated by the ubiquitin E1-like enzyme Atg7 and the E2-like enzyme Atg10.



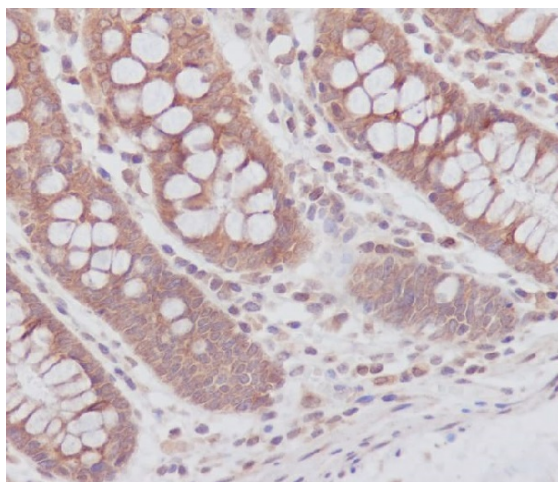
[View online »](#)

Synonyms: APG7-LIKE; APG7L; DKFZp434N0735; GSA7; hAGP7

### Product images:



Western blot analysis of ATG7 in HepG2 lysates using ATG7 antibody.



Immunohistochemical analysis of paraffin-embedded human colon, using ATG7 Antibody.