

Product datasheet for **TA383771M**

ATG5 Rabbit Monoclonal Antibody [Clone ID: R05-4F2]

Product data:

Product Type:	Primary Antibodies
Clone Name:	R05-4F2
Applications:	IF, IP, WB
Recommended Dilution:	WB: 1/1000-1/5000 ICC/IF: 1/20-1/100 IP: 1/20
Reactivity:	Human, Mouse, Rat
Host:	Rabbit
Isotype:	IgG
Clonality:	Monoclonal
Immunogen:	A synthetic peptide of human APG5L/ATG5
Formulation:	50mM Tris-Glycine(pH 7.4), 0.15M NaCl, 40% Glycerol, 0.01% Sodium azide and 0.05% BSA
Concentration:	lot specific
Purification:	Affinity Purified
Conjugation:	Unconjugated
Storage:	Store at 4°C short term. Aliquot and store at -20°C long term. Avoid freeze/thaw cycles.
Stability:	1 year
Predicted Protein Size:	Calculated MW: 33 kDa; Observed MW: 55 kDa
Gene Name:	autophagy related 5
Database Link:	Entrez Gene 9474 Human Q9H1Y0

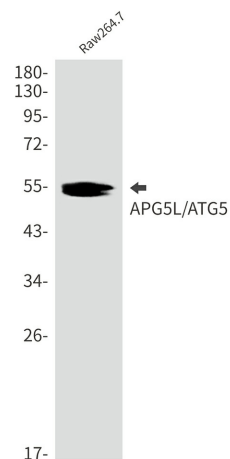
[View online »](#)

Background:

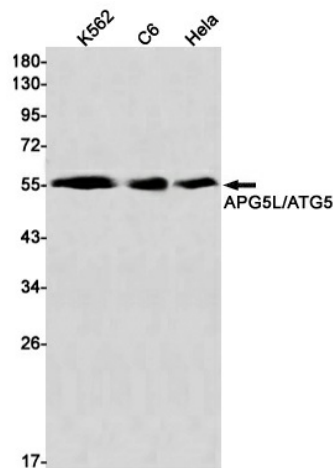
Swiss-Prot Acc.Q9H1Y0. Involved in autophagic vesicle formation. Conjugation with ATG12, through a ubiquitin-like conjugating system involving ATG7 as an E1-like activating enzyme and ATG10 as an E2-like conjugating enzyme, is essential for its function. The ATG12-ATG5 conjugate acts as an E3-like enzyme which is required for lipidation of ATG8 family proteins and their association to the vesicle membranes. Involved in mitochondrial quality control after oxidative damage, and in subsequent cellular longevity. Plays a critical role in multiple aspects of lymphocyte development and is essential for both B and T lymphocyte survival and proliferation. Required for optimal processing and presentation of antigens for MHC II. Involved in the maintenance of axon morphology and membrane structures, as well as in normal adipocyte differentiation. Promotes primary ciliogenesis through removal of OFD1 from centriolar satellites and degradation of IFT20 via the autophagic pathway.

Synonyms:

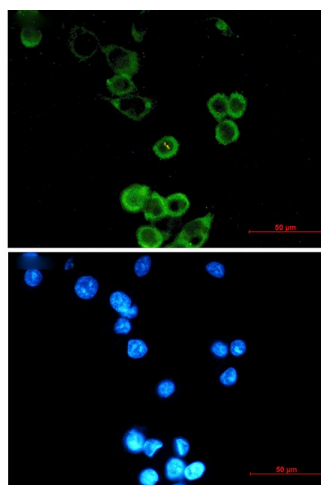
APG5; APG5-LIKE; APG5L; ASP; hAPG5; OTTHUMP00000017824

Product images:


Western blot analysis of APG5L/ATG5 in Raw264.7 lysates using APG5L antibody.



Western blot analysis of APG5L/ATG5 Rabbit pA in K562, C6, HeLa lysates using APG5L/ATG5 antibody.



Immunocytochemistry analysis of APG5L/ATG5 (green) in MCF-7 using APG5L/ATG5 antibody, and DAPI(blue)