

## Product datasheet for **TA383770S**

### ATG5 Rabbit Polyclonal Antibody

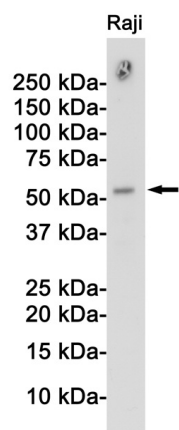
#### Product data:

Product Type:	Primary Antibodies
Applications:	FC, IF, IHC, WB
Recommended Dilution:	WB: 1/1000-1/2000 IHC: 1/20-1/50 ICC/IF: 1/20-1/100 FC: 1/50
Reactivity:	Human
Host:	Rabbit
Isotype:	IgG
Clonality:	Polyclonal
Immunogen:	A synthetic peptide of human APG5L/ATG5
Formulation:	50mM Tris-Glycine(pH 7.4), 0.15M NaCl, 40% Glycerol, 0.01% Sodium azide and 0.05% BSA
Concentration:	lot specific
Purification:	Affinity Purified
Conjugation:	Unconjugated
Storage:	Store at 4°C short term. Aliquot and store at -20°C long term. Avoid freeze/thaw cycles.
Stability:	1 year
Predicted Protein Size:	Calculated MW: 33 kDa; Observed MW: 55 kDa
Gene Name:	autophagy related 5
Database Link:	<a href="#">Entrez Gene 9474 Human Q9H1Y0</a>
Background:	Swiss-Prot Acc.Q9H1Y0.
Synonyms:	APG5; APG5-LIKE; APG5L; ASP; hAPG5; OTTHUMP00000017824

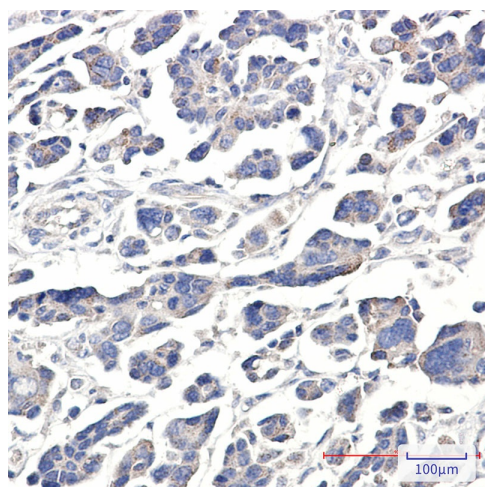


[View online »](#)

## Product images:



Western blot analysis of Atg5/Apg5L in Raji lysates using APG5L antibody.



Immunohistochemistry analysis of paraffin-embedded Human Cholangiocarcinoma using APG5L/ATG5 antibody. High-pressure and temperature Sodium Citrate pH 6.0 was used for antigen retrieval.