

Product datasheet for **TA383769**

ATG5 Mouse Monoclonal Antibody [Clone ID: 3C10-5C8-8C3]

Product data:

Product Type:	Primary Antibodies
Clone Name:	3C10-5C8-8C3
Applications:	IHC, WB
Recommended Dilution:	WB: 1/5000-10000 IHC: 1/100-200
Reactivity:	Human, Rat, Mouse
Host:	Mouse
Isotype:	IgG1
Clonality:	Monoclonal
Immunogen:	Purified recombinant protein expressed in E.coli.
Formulation:	Liquid in PBS containing 50% glycerol, 0.5% BSA and 0.03% Proclin 300, pH 7.3.
Concentration:	lot specific
Purification:	Affinity Purified
Conjugation:	Unconjugated
Storage:	Store at 4°C short term. Aliquot and store at -20°C long term. Avoid freeze/thaw cycles.
Stability:	1 year
Predicted Protein Size:	55kDa
Gene Name:	autophagy related 5
Database Link:	Entrez Gene 9474 Human Q9H1Y0



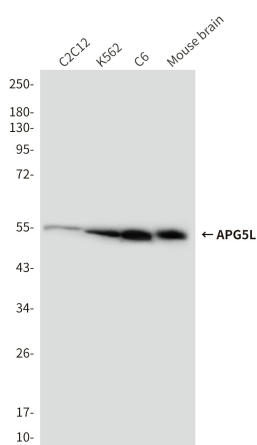
[View online »](#)

Background:

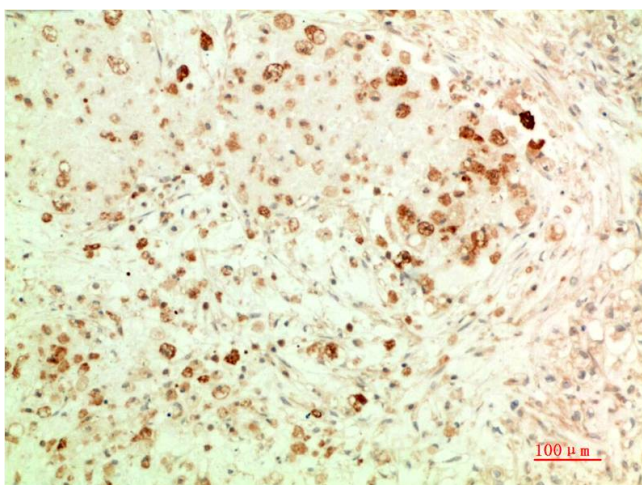
Swiss-Prot Acc.Q9H1Y0. Involved in autophagic vesicle formation. Conjugation with ATG12, through a ubiquitin-like conjugating system involving ATG7 as an E1-like activating enzyme and ATG10 as an E2-like conjugating enzyme, is essential for its function. The ATG12-ATG5 conjugate acts as an E3-like enzyme which is required for lipidation of ATG8 family proteins and their association to the vesicle membranes. Involved in mitochondrial quality control after oxidative damage, and in subsequent cellular longevity. Plays a critical role in multiple aspects of lymphocyte development and is essential for both B and T lymphocyte survival and proliferation. Required for optimal processing and presentation of antigens for MHC II. Involved in the maintenance of axon morphology and membrane structures, as well as in normal adipocyte differentiation. Promotes primary ciliogenesis through removal of OFD1 from centriolar satellites and degradation of IFT20 via the autophagic pathway.

Synonyms:

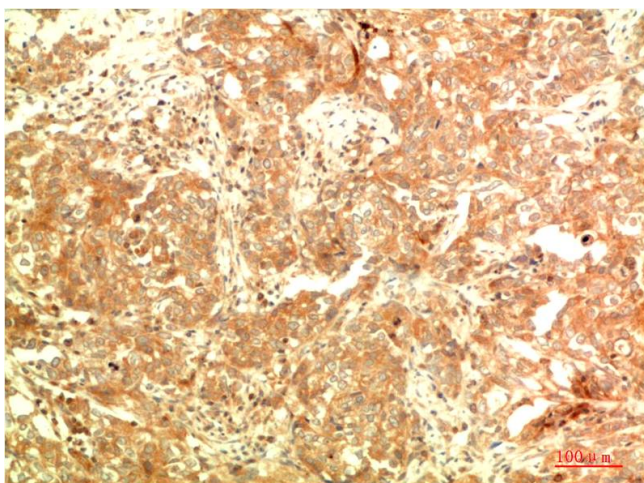
APG5; APG5-LIKE; APG5L; ASP; hAPG5; OTTHUMP00000017824

Product images:

Western blot analysis of APG5L (3C10) in C2C12, K562, C6, mouse brain lysates using APG5L (3C10) antibody



Immunohistochemistry analysis of paraffin-embedded Human Ovarian Carcinoma Tissue using APG5L (3C10) antibody. High-pressure and temperature Sodium Citrate pH 6.0 was used for antigen retrieval.



Immunohistochemical analysis of paraffin-embedded Human tonsils using APG5L (3C10) antibody. High-pressure and temperature Sodium Citrate pH 6.0 was used for antigen retrieval.