

## Product datasheet for **TA383768**

### ATG5 Mouse Monoclonal Antibody [Clone ID: 8F1-2C11-D9]

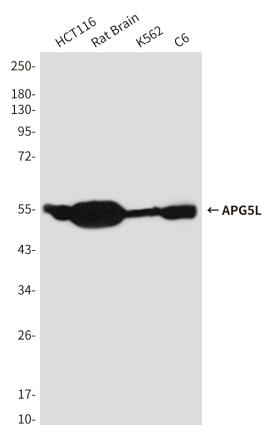
#### Product data:

Product Type:	Primary Antibodies
Clone Name:	8F1-2C11-D9
Applications:	WB
Recommended Dilution:	WB: 1/1000
Reactivity:	Human, Mouse, Rat
Host:	Mouse
Isotype:	IgG1
Clonality:	Monoclonal
Immunogen:	Synthetic peptide.
Formulation:	Liquid in PBS containing 50% glycerol, 0.5% BSA and 0.03% Proclin 300, pH 7.3.
Concentration:	lot specific
Purification:	Affinity Purified
Conjugation:	Unconjugated
Storage:	Store at 4°C short term. Aliquot and store at -20°C long term. Avoid freeze/thaw cycles.
Stability:	1 year
Predicted Protein Size:	55kDa
Gene Name:	autophagy related 5
Database Link:	<a href="#">Entrez Gene 9474 Human Q9H1Y0</a>
Background:	Swiss-Prot Acc.Q9H1Y0.Required for autophagy. Conjugates to ATG12 and associates with isolation membrane to form cup-shaped isolation membrane and autophagosome. The conjugate detaches from the membrane immediately before or after autophagosome formation is completed By similarity. Ref.6May play an important role in the apoptotic process, possibly within the modified cytoskeleton. Its expression is a relatively late event in the apoptotic process, occurring downstream of caspase activity.
Synonyms:	APG5; APG5-LIKE; APG5L; ASP; hAPG5; OTTHUMP00000017824



[View online »](#)

## Product images:



Western blot analysis of Atg5 in HCT116, rat Brain, K562 and C6 lysates using Atg5 antibody.