

Product datasheet for **TA383767M**

ATG4C Rabbit Monoclonal Antibody [Clone ID: R08-8G9]

Product data:

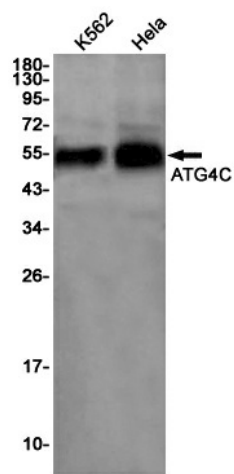
Product Type:	Primary Antibodies
Clone Name:	R08-8G9
Applications:	IHC, WB
Recommended Dilution:	WB: 1/1000 IHC: 1/50
Reactivity:	Human
Host:	Rabbit
Isotype:	IgG
Clonality:	Monoclonal
Immunogen:	Recombinant protein of human ATG4C
Formulation:	50mM Tris-Glycine(pH 7.4), 0.15M NaCl, 40% Glycerol, 0.01% Sodium azide and 0.05% BSA
Concentration:	lot specific
Purification:	Affinity Purified
Conjugation:	Unconjugated
Storage:	Store at 4°C short term. Aliquot and store at -20°C long term. Avoid freeze/thaw cycles.
Stability:	1 year
Predicted Protein Size:	Calculated MW: 53 kDa; Observed MW: 53 kDa
Gene Name:	autophagy related 4C cysteine peptidase
Database Link:	Entrez Gene 84938 Human Q96DT6
Background:	Swiss-Prot Acc.Q96DT6.Cysteine protease required for the cytoplasm to vacuole transport (Cvt) and autophagy. Is not essential for autophagy development under normal conditions but is required for a proper autophagic response under stressful conditions such as prolonged starvation . Cleaves the C-terminal amino acid of ATG8 family proteins MAP1LC3 and GABARAPL2, to reveal a C-terminal glycine. Exposure of the glycine at the C-terminus is essential for ATG8 proteins conjugation to phosphatidylethanolamine (PE) and insertion to membranes, which is necessary for autophagy. Has also an activity of delipidating enzyme for the PE-conjugated forms.



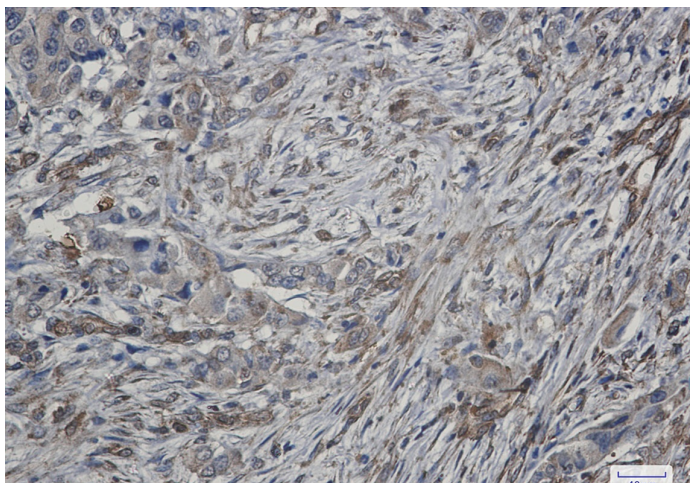
[View online »](#)

Synonyms: APG4-C; APG4C; AUTL1; AUTL3; autophagin-3; FLJ14867

Product images:



Western blot analysis of ATG4C in K562, HeLa lysates using ATG4C antibody.



Immunohistochemistry analysis of paraffin-embedded Human lung cancer using ATG4C antibody. High-pressure and temperature Sodium Citrate pH 6.0 was used for antigen retrieval.