

Product datasheet for **TA383766**

ATG4C Rabbit Polyclonal Antibody

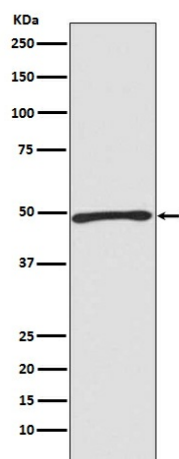
Product data:

| | |
|-------------------------|--|
| Product Type: | Primary Antibodies |
| Applications: | FC, IHC, WB |
| Recommended Dilution: | WB: 1/1000-1/5000 IHC: 1/50-1/200 FC: 1/50 |
| Reactivity: | Human |
| Host: | Rabbit |
| Isotype: | IgG |
| Clonality: | Polyclonal |
| Immunogen: | A synthesized peptide derived from human Atg4C |
| Formulation: | Rabbit IgG in phosphate buffered saline , pH 7.4, 150mM NaCl, 0.02% sodium azide and 50% glycerol. |
| Concentration: | lot specific |
| Purification: | Affinity Chromatography |
| Conjugation: | Unconjugated |
| Storage: | Store at 4°C short term. Aliquot and store at -20°C long term. Avoid freeze/thaw cycles. |
| Stability: | 1 year |
| Predicted Protein Size: | 52kDa |
| Gene Name: | autophagy related 4C cysteine peptidase |
| Database Link: | Entrez Gene 84938 Human Q96DT6 |
| Background: | Swiss-Prot Acc.Q96DT6.Cysteine protease required for autophagy, which cleaves the C-terminal part of either MAP1LC3, GABARAPL2 or GABARAP, allowing the liberation of form I. A subpopulation of form I is subsequently converted to a smaller form (form II). Form II, with a revealed C-terminal glycine, is considered to be the phosphatidylethanolamine (PE)-conjugated form, and has the capacity for the binding to autophagosomes. |
| Synonyms: | APG4-C; APG4C; AUTL1; AUTL3; autophagin-3; FLJ14867 |



[View online »](#)

Product images:



Western blot analysis of Atg4C in Jurkat lysates using ATG4C antibody.