

Product datasheet for **TA383762**

Apg12 (ATG12) Rabbit Monoclonal Antibody [Clone ID: R08-2F4]

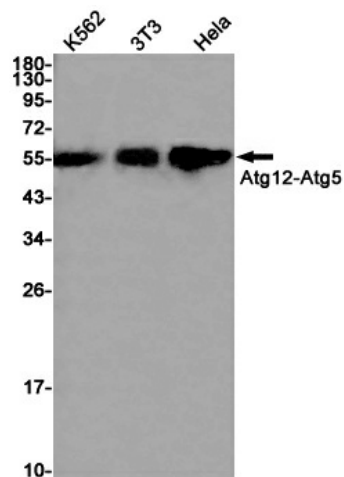
Product data:

Product Type:	Primary Antibodies
Clone Name:	R08-2F4
Applications:	WB
Recommended Dilution:	WB: 1/1000-1/5000
Reactivity:	Human, Mouse
Host:	Rabbit
Isotype:	IgG
Clonality:	Monoclonal
Immunogen:	A synthetic peptide of human Apg12
Formulation:	50mM Tris-Glycine(pH 7.4), 0.15M NaCl, 40% Glycerol, 0.01% Sodium azide and 0.05% BSA
Concentration:	lot specific
Purification:	Affinity Purified
Conjugation:	Unconjugated
Storage:	Store at 4°C short term. Aliquot and store at -20°C long term. Avoid freeze/thaw cycles.
Stability:	1 year
Predicted Protein Size:	Calculated MW: 15 kDa; Observed MW: 55 kDa
Gene Name:	autophagy related 12
Database Link:	Entrez Gene 9140 Human O94817
Background:	Swiss-Prot Acc.O94817.Ubiquitin-like protein involved in autophagy vesicles formation. Conjugation with ATG5 through a ubiquitin-like conjugating system involving also ATG7 as an E1-like activating enzyme and ATG10 as an E2-like conjugating enzyme, is essential for its function. The ATG12-ATG5 conjugate acts as an E3-like enzyme which is required for lipidation of ATG8 family proteins and their association to the vesicle membranes.
Synonyms:	APG12; APG12-like; APG12L; FBR93; HAPG12



[View online »](#)

Product images:



Western blot analysis of Apg12 in K562, 3T3, HeLa lysates using ATG12 antibody.