

Product datasheet for **TA383761**

Apg10 (ATG10) Rabbit Polyclonal Antibody

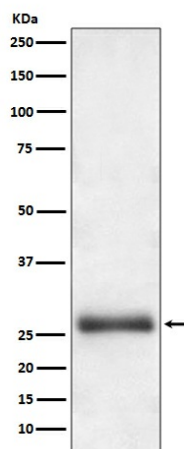
Product data:

Product Type:	Primary Antibodies
Applications:	IP, WB
Recommended Dilution:	WB: 1/500-1/2000 IP: 1/50
Reactivity:	Human
Host:	Rabbit
Isotype:	IgG
Clonality:	Polyclonal
Immunogen:	A synthesized peptide derived from human Apg10 (Atg10)
Formulation:	Rabbit IgG in phosphate buffered saline , pH 7.4, 150mM NaCl, 0.02% sodium azide and 50% glycerol.
Concentration:	lot specific
Purification:	Affinity Chromatography
Conjugation:	Unconjugated
Storage:	Store at 4°C short term. Aliquot and store at -20°C long term. Avoid freeze/thaw cycles.
Stability:	1 year
Predicted Protein Size:	25kDa
Gene Name:	autophagy related 10
Database Link:	Entrez Gene 83734 Human Q9H0Y0
Background:	Swiss-Prot Acc.Q9H0Y0.E2-like enzyme involved in autophagy. Acts as an E2-like enzyme that catalyzes the conjugation of ATG12 to ATG5. ATG12 conjugation to ATG5 is required for autophagy. Likely serves as an ATG5-recognition molecule. Not involved in ATG12 conjugation to ATG3 (By similarity). Plays a role in adenovirus-mediated cell lysis.
Synonyms:	APG10; APG10-like; APG10L; DKFZp586I0418; FLJ13954; pp12616



[View online »](#)

Product images:



Western blot analysis of Apg10 (Atg10) in HeLa lysates using ATG10 antibody.