

Product datasheet for **TA383757S**

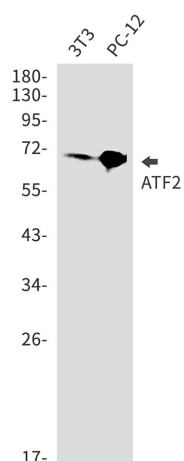
ATF2 Rabbit Monoclonal Antibody [Clone ID: R01-9F9]

Product data:

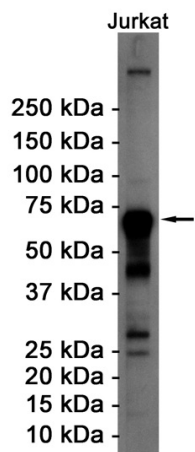
Product Type:	Primary Antibodies
Clone Name:	R01-9F9
Applications:	WB
Recommended Dilution:	WB: 1/1000
Reactivity:	Human, Mouse, Rat
Host:	Rabbit
Isotype:	IgG
Clonality:	Monoclonal
Immunogen:	Recombinant protein of human ATF2
Formulation:	50mM Tris-Glycine(pH 7.4), 0.15M NaCl, 40% Glycerol, 0.01% Sodium azide and 0.05% BSA
Concentration:	lot specific
Purification:	Affinity Purified
Conjugation:	Unconjugated
Storage:	Store at 4°C short term. Aliquot and store at -20°C long term. Avoid freeze/thaw cycles.
Stability:	1 year
Predicted Protein Size:	Calculated MW: 55 kDa; Observed MW: 70 kDa
Gene Name:	activating transcription factor 2
Database Link:	Entrez Gene 1386 Human P16951
Background:	Swiss-Prot Acc.P16951.
Synonyms:	CRE-BP1; CREB-2; CREB2; CREBP1; HB16; MGC111558; TREB7



[View online »](#)

Product images:


Western blot analysis of ATF2 in 3T3, PC-12 lysates using ATF2 antibody.



Western blot analysis of ATF2 in Jurkat lysates using ATF2 antibody.