

## Product datasheet for **TA383755**

### ATF2 Rabbit Polyclonal Antibody

#### Product data:

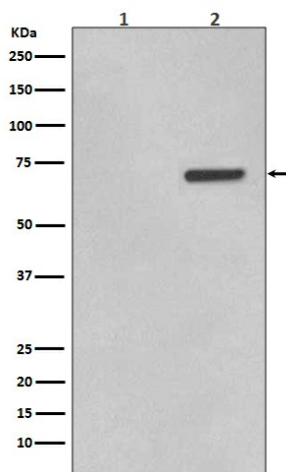
Product Type:	Primary Antibodies
Applications:	IF, IP, WB
Recommended Dilution:	WB: 1/500-1/2000 ICC/IF: 1/50-1/200 IP: 1/30
Reactivity:	Human
Host:	Rabbit
Isotype:	IgG
Clonality:	Polyclonal
Immunogen:	A synthesized peptide derived from human Phospho-ATF2 (T71) (Phosphorylated)
Formulation:	Rabbit IgG in phosphate buffered saline , pH 7.4, 150mM NaCl, 0.02% sodium azide and 50% glycerol.
Concentration:	lot specific
Purification:	Affinity Chromatography
Conjugation:	Unconjugated
Storage:	Store at 4°C short term. Aliquot and store at -20°C long term. Avoid freeze/thaw cycles.
Stability:	1 year
Predicted Protein Size:	70kDa
Gene Name:	activating transcription factor 2
Database Link:	<a href="#">Entrez Gene 1386 Human P15336</a>
Background:	Swiss-Prot Acc.P15336.The transcription factor ATF-2 (also called CRE-BP1) binds to both AP-1 and CRE DNA response elements and is a member of the ATF/CREB family of leucine zipper proteins. ATF-2 interacts with a variety of viral oncoproteins and cellular tumor suppressors and is a target of the SAPK/JNK and p38 MAP kinase signaling pathways. Various forms of cellular stress, including genotoxic agents, inflammatory cytokines, and UV irradiation, stimulate the transcriptional activity of ATF-2. Cellular stress activates ATF-2 by phosphorylation of Thr69 and Thr71.



[View online »](#)

Synonyms: CRE-BP1; CREB-2; CREB2; CREBP1; HB16; MGC111558; TREB7

### Product images:



Western blot analysis of Phospho-ATF2 (T71) in (1) HeLa lysates; (2) HeLa lysates treated with Anisomycin using Phospho-ATF2 (Thr71) antibody.