

Product datasheet for **TA383753S**

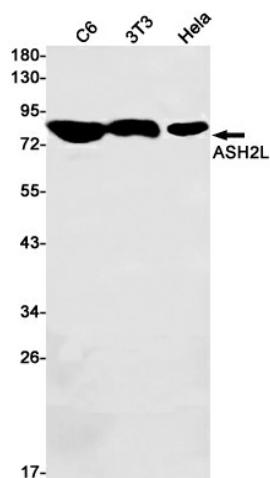
ASH2L Rabbit Monoclonal Antibody [Clone ID: R05-7E1]

Product data:

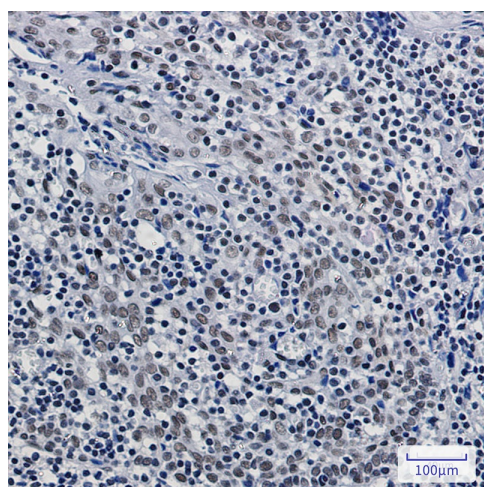
Product Type:	Primary Antibodies
Clone Name:	R05-7E1
Applications:	IF, IHC, WB
Recommended Dilution:	WB: 1/2000-1/10000 IHC: 1/20 ICC/IF: 1/500
Reactivity:	Human, Mouse, Rat
Host:	Rabbit
Isotype:	IgG
Clonality:	Monoclonal
Immunogen:	A synthetic peptide of human ASH2L
Formulation:	50mM Tris-Glycine(pH 7.4), 0.15M NaCl, 40% Glycerol, 0.01% Sodium azide and 0.05% BSA
Concentration:	lot specific
Purification:	Affinity Purified
Conjugation:	Unconjugated
Storage:	Store at 4°C short term. Aliquot and store at -20°C long term. Avoid freeze/thaw cycles.
Stability:	1 year
Predicted Protein Size:	Calculated MW: 69 kDa; Observed MW: 80 kDa
Gene Name:	ASH2 like histone lysine methyltransferase complex subunit
Database Link:	Entrez Gene 9070 Human Q9UBL3
Background:	Swiss-Prot Acc.Q9UBL3.Component of the Set1/Ash2 histone methyltransferase (HMT) complex, a complex that specifically methylates 'Lys-4' of histone H3, but not if the neighboring 'Lys-9' residue is already methylated. As part of the MLL1/MLL complex it is involved in methylation and dimethylation at 'Lys-4' of histone H3. May function as a transcriptional regulator. May play a role in hematopoiesis.
Synonyms:	ASH2; ash2-like; ASH2L1; ASH2L2; Bre2



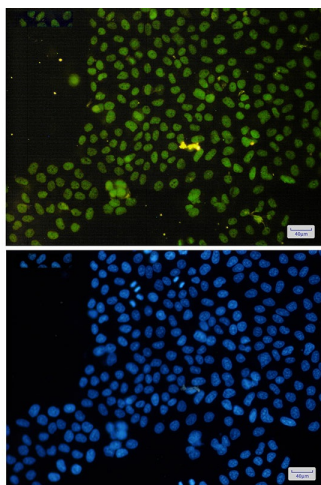
[View online »](#)

Product images:

Western blot analysis of ASH2L in C6, 3T3, HeLa lysates using ASH2L antibody.



Immunohistochemistry analysis of paraffin-embedded Human tonsil using ASH2L antibody. High-pressure and temperature Sodium Citrate pH 6.0 was used for antigen retrieval.



Immunocytochemistry analysis of ASH2L(green) in HeLa using ASH2L antibody, and DAPI(blue)