

Product datasheet for **TA383751S**

Artemin (ARTN) Rabbit Monoclonal Antibody [Clone ID: R06-6F8]

Product data:

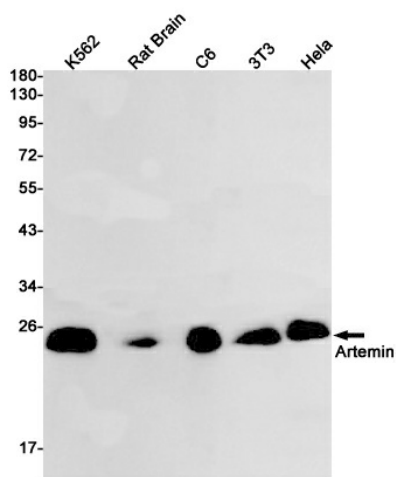
| | |
|-------------------------|---|
| Product Type: | Primary Antibodies |
| Clone Name: | R06-6F8 |
| Applications: | IHC, IP, WB |
| Recommended Dilution: | WB: 1/1000 IHC: 1/20 IP: 1/20 |
| Reactivity: | Human, Mouse, Rat |
| Host: | Rabbit |
| Isotype: | IgG |
| Clonality: | Monoclonal |
| Immunogen: | A synthetic peptide of human Artemin |
| Formulation: | 50mM Tris-Glycine(pH 7.4), 0.15M NaCl, 40% Glycerol, 0.01% Sodium azide and 0.05% BSA |
| Concentration: | lot specific |
| Purification: | Affinity Purified |
| Conjugation: | Unconjugated |
| Storage: | Store at 4°C short term. Aliquot and store at -20°C long term. Avoid freeze/thaw cycles. |
| Stability: | 1 year |
| Predicted Protein Size: | Calculated MW: 23 kDa; Observed MW: 23 kDa |
| Gene Name: | artemin |
| Database Link: | Entrez Gene 9048 Human Q5T4W7 |
| Background: | Swiss-Prot Acc.Q5T4W7.Ligand for the GFR-alpha-3-RET receptor complex but can also activate the GFR-alpha-1-RET receptor complex. Supports the survival of sensory and sympathetic peripheral neurons in culture and also supports the survival of dopaminergic neurons of the ventral mid-brain. Strong attractant of gut hematopoietic cells thus promoting the formation Peyer's patch-like structures, a major component of the gut-associated lymphoid tissue. |



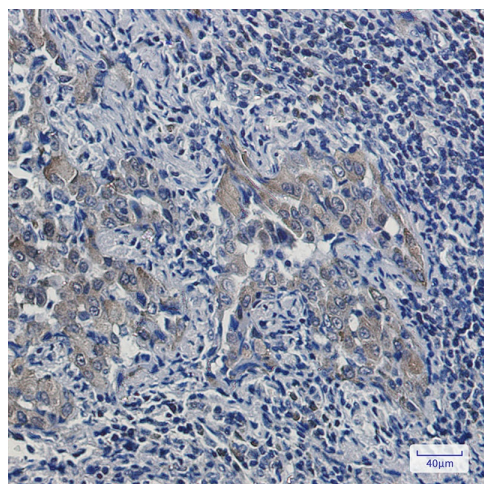
[View online »](#)

Synonyms: artemin; ENOVIN; EVN; NBN; neublastin

Product images:



Western blot analysis of Artemin in K562, rat Brain, C6, 3T3, HeLa lysates using Artemin antibody.



Immunohistochemistry analysis of paraffin-embedded Human lung cancer using Artemin antibody. High-pressure and temperature Sodium Citrate pH 6.0 was used for antigen retrieval.