

Product datasheet for **TA383750S**

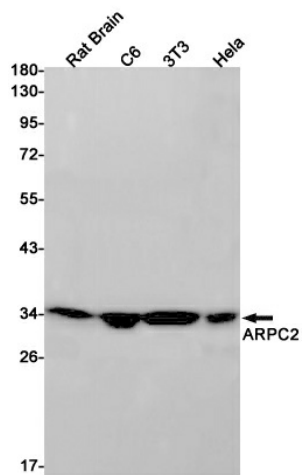
ARPC2 Rabbit Monoclonal Antibody [Clone ID: R04-1B6]

Product data:

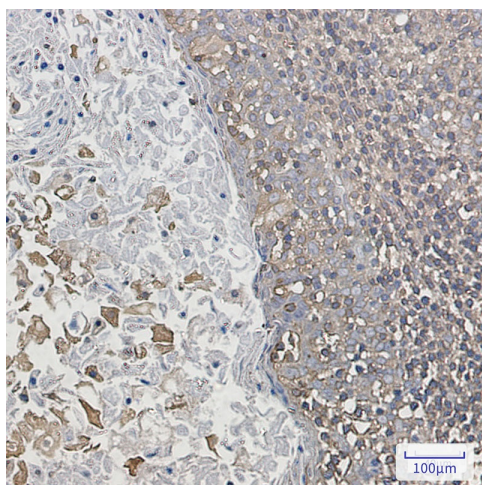
Product Type:	Primary Antibodies
Clone Name:	R04-1B6
Applications:	IF, IHC, IP, WB
Recommended Dilution:	WB: 1/1000 IHC: 1/50 ICC/IF: 1/50 IP: 1/20
Reactivity:	Human, Mouse, Rat
Host:	Rabbit
Isotype:	IgG
Clonality:	Monoclonal
Immunogen:	A synthetic peptide of human ARPC2
Formulation:	50mM Tris-Glycine(pH 7.4), 0.15M NaCl, 40% Glycerol, 0.01% Sodium azide and 0.05% BSA
Concentration:	lot specific
Purification:	Affinity Purified
Conjugation:	Unconjugated
Storage:	Store at 4°C short term. Aliquot and store at -20°C long term. Avoid freeze/thaw cycles.
Stability:	1 year
Predicted Protein Size:	Calculated MW: 34 kDa; Observed MW: 34 kDa
Gene Name:	actin related protein 2/3 complex subunit 2
Database Link:	Entrez Gene 10109 Human O15144
Background:	Swiss-Prot Acc.O15144.Functions as actin-binding component of the Arp2/3 complex which is involved in regulation of actin polymerization and together with an activating nucleation-promoting factor (NPF) mediates the formation of branched actin networks. Seems to contact the mother actin filament.
Synonyms:	ARC34; p34-Arc; PNAS-139; PRO2446



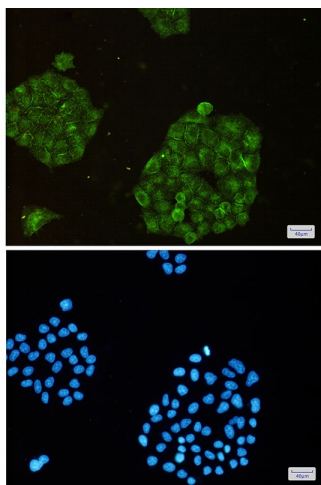
[View online »](#)

Product images:

Western blot analysis of ARPC2 in rat Brain, C6, 3T3, HeLa lysates using ARPC2 antibody.



Immunohistochemistry analysis of paraffin-embedded Human tonsil using ARPC2 antibody. High-pressure and temperature Sodium Citrate pH 6.0 was used for antigen retrieval.



Immunocytochemistry analysis of ARPC2(green) in HeLa using ARPC2 antibody, and DAPI(blue)