

## Product datasheet for **TA383750M**

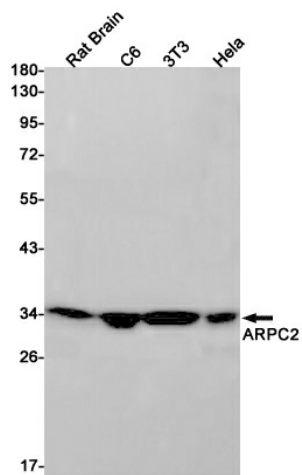
### ARPC2 Rabbit Monoclonal Antibody [Clone ID: R04-1B6]

#### Product data:

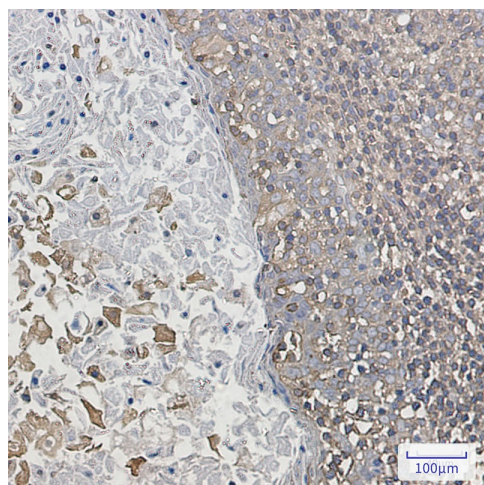
|                         |   |
|-------------------------|---|
| Product Type:           | Primary Antibodies  |
| Clone Name:             | R04-1B6   |
| Applications:           | IF, IHC, IP, WB   |
| Recommended Dilution:   | WB: 1/1000<br>IHC: 1/50<br>ICC/IF: 1/50<br>IP: 1/20   |
| Reactivity:             | Human, Mouse, Rat   |
| Host:                   | Rabbit  |
| Isotype:                | IgG   |
| Clonality:              | Monoclonal  |
| Immunogen:              | A synthetic peptide of human ARPC2  |
| Formulation:            | 50mM Tris-Glycine(pH 7.4), 0.15M NaCl, 40% Glycerol, 0.01% Sodium azide and 0.05% BSA   |
| Concentration:          | lot specific  |
| Purification:           | Affinity Purified   |
| Conjugation:            | Unconjugated  |
| Storage:                | Store at 4°C short term. Aliquot and store at -20°C long term. Avoid freeze/thaw cycles.  |
| Stability:              | 1 year  |
| Predicted Protein Size: | Calculated MW: 34 kDa; Observed MW: 34 kDa  |
| Gene Name:              | actin related protein 2/3 complex subunit 2   |
| Database Link:          | <a href="#">Entrez Gene 10109 Human O15144</a>  |
| Background:             | Swiss-Prot Acc.O15144.Functions as actin-binding component of the Arp2/3 complex which is involved in regulation of actin polymerization and together with an activating nucleation-promoting factor (NPF) mediates the formation of branched actin networks. Seems to contact the mother actin filament. |
| Synonyms:               | ARC34; p34-Arc; PNAS-139; PRO2446   |


[View online »](#)

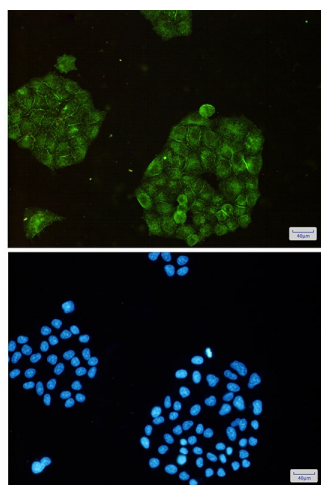
## Product images:



Western blot analysis of ARPC2 in rat Brain, C6, 3T3, HeLa lysates using ARPC2 antibody.



Immunohistochemistry analysis of paraffin-embedded Human tonsil using ARPC2 antibody. High-pressure and temperature Sodium Citrate pH 6.0 was used for antigen retrieval.



Immunocytochemistry analysis of ARPC2(green) in HeLa using ARPC2 antibody, and DAPI(blue)