

Product datasheet for **TA383749**

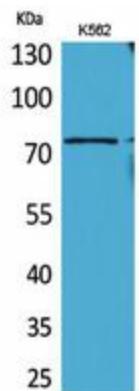
BMAL1 (ARNTL) Rabbit Polyclonal Antibody

Product data:

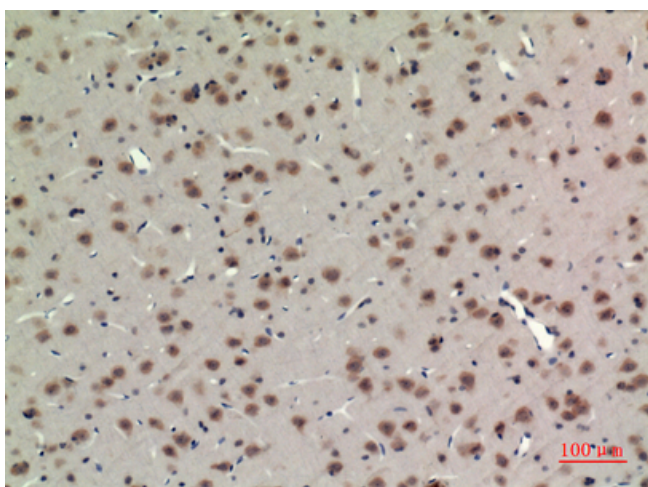
Product Type:	Primary Antibodies
Applications:	ELISA, IHC, WB
Recommended Dilution:	WB: 1/500-1/2000 IHC-p: 1/100-1/300 ELISA: 1/20000
Reactivity:	Human, Mouse, Rat
Host:	Rabbit
Isotype:	IgG
Clonality:	Polyclonal
Immunogen:	The antiserum was produced against synthesized peptide derived from human BMAL1 around the non-acetylation site of Lys538. AA range:501-550
Formulation:	Liquid in PBS containing 50% glycerol, 0.5% BSA and 0.02% sodium azide, pH 7.3.
Concentration:	lot specific
Purification:	Affinity Purified
Conjugation:	Unconjugated
Storage:	Store at 4°C short term. Aliquot and store at -20°C long term. Avoid freeze/thaw cycles.
Stability:	1 year
Predicted Protein Size:	Observed MW (kDa):69
Gene Name:	aryl hydrocarbon receptor nuclear translocator like
Database Link:	Entrez Gene 406 Human O00327
Background:	Swiss-Prot Acc.O00327.
Synonyms:	bHLHe5; BMAL1; BMAL1c; JAP3; MGC47515; MOP3; PASD3; TIC



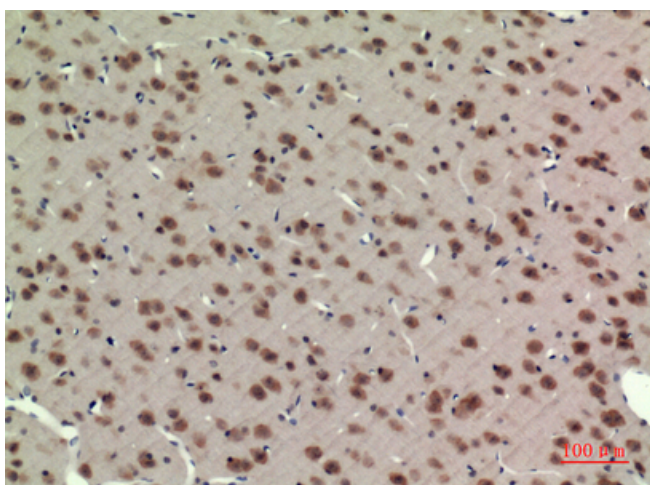
[View online »](#)

Product images:

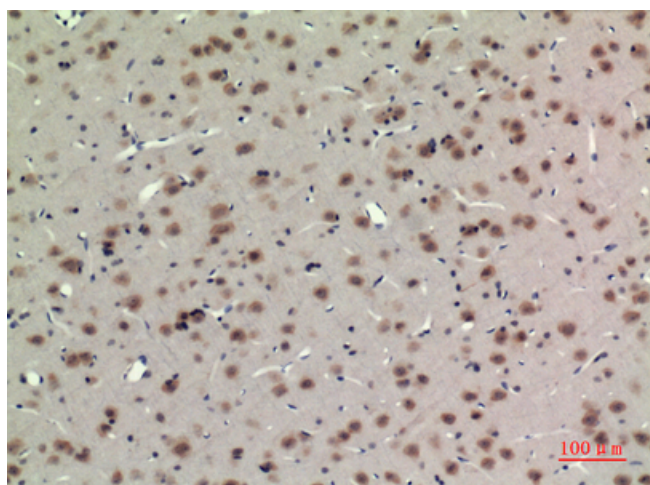
Western blot analysis of BMAL1 in K562 lysates using BMAL1 antibody.



Immunohistochemistry analysis of paraffin-embedded rat brain using BMAL1 antibody. High-pressure and temperature Sodium Citrate pH 6.0 was used for antigen retrieval.



Immunohistochemistry analysis of paraffin-embedded rat brain using BMAL1 antibody. High-pressure and temperature Sodium Citrate pH 6.0 was used for antigen retrieval.



Immunohistochemistry analysis of paraffin-embedded rat brain using BMAL1 antibody. High-pressure and temperature Sodium Citrate pH 6.0 was used for antigen retrieval.