

## Product datasheet for **TA383748**

### ARHGAP35 Rabbit Polyclonal Antibody

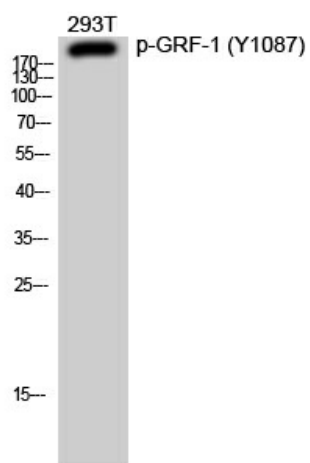
#### Product data:

Product Type:	Primary Antibodies
Applications:	ELISA, WB
Recommended Dilution:	WB: 1/500-1/2000 ELISA: 1/10000
Reactivity:	Human, Mouse, Rat
Host:	Rabbit
Isotype:	IgG
Clonality:	Polyclonal
Immunogen:	Synthesized phospho-peptide around the phosphorylation site of human GRF-1 (phospho Tyr1087) (Phosphorylated)
Formulation:	Liquid in PBS containing 50% glycerol, 0.5% BSA and 0.02% sodium azide, pH 7.3.
Concentration:	lot specific
Purification:	Affinity Purified
Conjugation:	Unconjugated
Storage:	Store at 4°C short term. Aliquot and store at -20°C long term. Avoid freeze/thaw cycles.
Stability:	1 year
Predicted Protein Size:	Observed MW (kDa):190
Database Link:	<a href="#">Q9NRY4</a>
Background:	Swiss-Prot Acc.Q9NRY4.



[View online »](#)

## Product images:



Western blot analysis of Phospho-GRLF1 (Tyr1087) in 293T lysates using Phospho-GRLF1 (Tyr1087) antibody.