

Product datasheet for **TA383746**

A RAF (ARAF) Rabbit Polyclonal Antibody

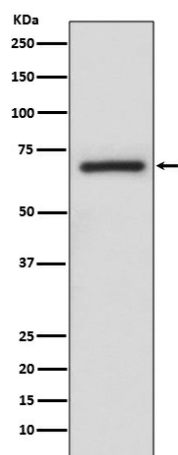
Product data:

Product Type:	Primary Antibodies
Applications:	FC, IF, IHC, WB
Recommended Dilution:	WB: 1/500-1/2000 IHC: 1/50-1/200 ICC/IF: 1/50-1/200 FC: 1/50
Reactivity:	Human
Host:	Rabbit
Isotype:	IgG
Clonality:	Polyclonal
Immunogen:	A synthesized peptide derived from human A-RAF
Formulation:	Rabbit IgG in phosphate buffered saline , pH 7.4, 150mM NaCl, 0.02% sodium azide and 50% glycerol.
Concentration:	lot specific
Purification:	Affinity Chromatography
Conjugation:	Unconjugated
Storage:	Store at 4°C short term. Aliquot and store at -20°C long term. Avoid freeze/thaw cycles.
Stability:	1 year
Predicted Protein Size:	68kDa
Gene Name:	A-Raf proto-oncogene, serine/threonine kinase
Database Link:	Entrez Gene 369 Human P10398
Background:	Swiss-Prot Acc.P10398.Involved in the transduction of mitogenic signals from the cell membrane to the nucleus. May also regulate the TOR signaling cascade.
Synonyms:	A-RAF; A-raf-1; ARAF1; PKS; PKS2; RAFA1



[View online »](#)

Product images:



Western blot analysis of ARAF in A375 lysates using A RAF antibody.