

Product datasheet for **TA383745**

Aquaporin 1 (AQP1) Rabbit Polyclonal Antibody

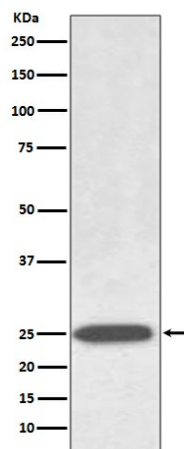
Product data:

Product Type:	Primary Antibodies
Applications:	IF, IHC, WB
Recommended Dilution:	WB: 1/500-1/2000 IHC: 1/50-1/200 ICC/IF: 1/50-1/200
Reactivity:	Human, Mouse, Rat
Host:	Rabbit
Isotype:	IgG
Clonality:	Polyclonal
Immunogen:	A synthesized peptide derived from human AQP1
Formulation:	Rabbit IgG in phosphate buffered saline , pH 7.4, 150mM NaCl, 0.02% sodium azide and 50% glycerol.
Concentration:	lot specific
Purification:	Affinity Chromatography
Conjugation:	Unconjugated
Storage:	Store at 4°C short term. Aliquot and store at -20°C long term. Avoid freeze/thaw cycles.
Stability:	1 year
Predicted Protein Size:	28kDa
Gene Name:	aquaporin 1 (Colton blood group)
Database Link:	Entrez Gene 358 Human P29972
Background:	Swiss-Prot Acc.P29972.Forms a water-specific channel that provides the plasma membranes of red cells and kidney proximal tubules with high permeability to water, thereby permitting water to move in the direction of an osmotic gradient.
Synonyms:	AQP-1; AQP-CHIP; Aquaporin-CHIP; CHIP28; CO; MGC26324



[View online »](#)

Product images:



Western blot analysis of AQP1 in Human fetal kidney lysates using Aquaporin 1 antibody.