

## Product datasheet for **TA383744S**

### APPL (APPL1) Rabbit Monoclonal Antibody [Clone ID: R05-8D5]

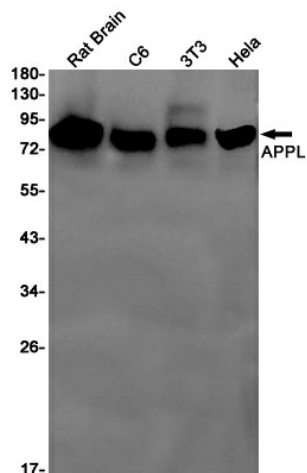
#### Product data:

Product Type:	Primary Antibodies
Clone Name:	R05-8D5
Applications:	IHC, WB
Recommended Dilution:	WB: 1/1000-1/5000 IHC: 1/20
Reactivity:	Human, Mouse, Rat
Host:	Rabbit
Isotype:	IgG
Clonality:	Monoclonal
Immunogen:	A synthetic peptide of human APPL
Formulation:	50mM Tris-Glycine(pH 7.4), 0.15M NaCl, 40% Glycerol, 0.01% Sodium azide and 0.05% BSA
Concentration:	lot specific
Purification:	Affinity Purified
Conjugation:	Unconjugated
Storage:	Store at 4°C short term. Aliquot and store at -20°C long term. Avoid freeze/thaw cycles.
Stability:	1 year
Predicted Protein Size:	Calculated MW: 80 kDa; Observed MW: 80 kDa
Gene Name:	adaptor protein, phosphotyrosine interacting with PH domain and leucine zipper 1
Database Link:	<a href="#">Entrez Gene 26060 Human Q9UKG1</a>
Background:	Swiss-Prot Acc.Q9UKG1.Adapter protein that interacts with proteins involved in different cellular signaling pathways. Required for the regulation of cell proliferation in response to extracellular signals from an early endosomal compartment. Links Rab5 to nuclear signal transduction. Involved in the regulation of the insulin receptor signaling pathway.
Synonyms:	APPL; Dip13-alpha; DIP13A; DIP13alpha; KIAA1428

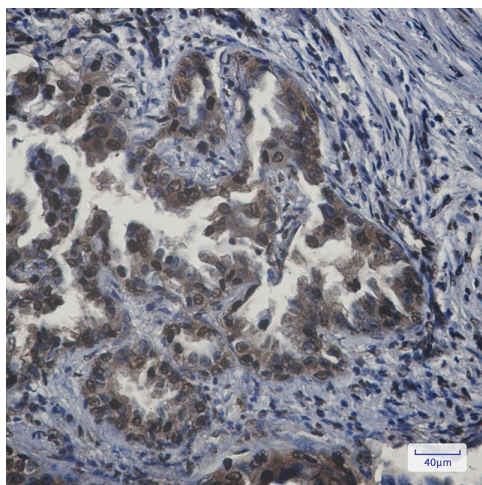


[View online »](#)

## Product images:



Western blot analysis of APPL in rat Brain, C6, 3T3, HeLa lysates using APPL antibody.



Immunohistochemistry analysis of paraffin-embedded Human lung cancer using APPL antibody. High-pressure and temperature Sodium Citrate pH 6.0 was used for antigen retrieval.