

Product datasheet for **TA383737**

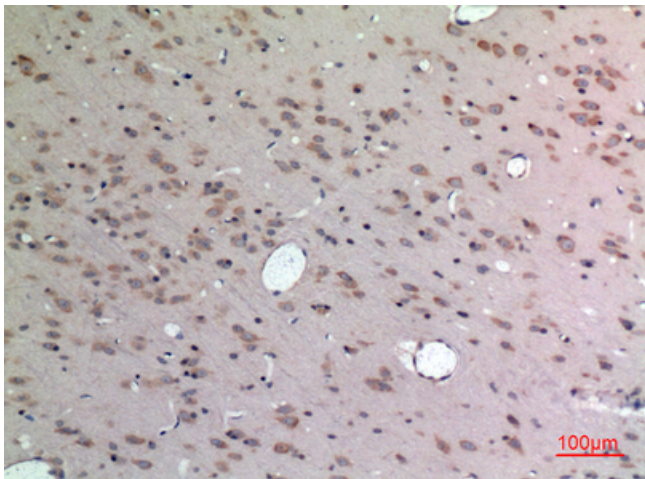
APLN Rabbit Polyclonal Antibody

Product data:

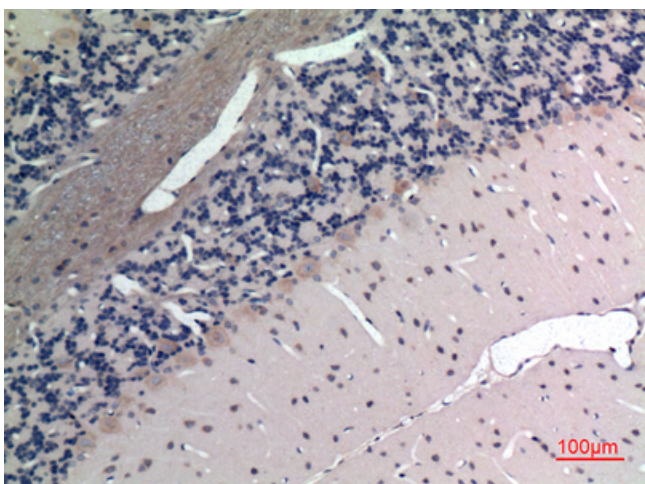
Product Type:	Primary Antibodies
Applications:	ELISA, IHC
Recommended Dilution:	IHC-p: 1/100-300 ELISA: 1/20000
Reactivity:	Human, Mouse, Rat
Host:	Rabbit
Isotype:	IgG
Clonality:	Polyclonal
Immunogen:	The antiserum was produced against synthesized peptide derived from the C-terminal region of human APLN. AA range:28-77
Formulation:	Liquid in PBS containing 50% glycerol, 0.5% BSA and 0.02% sodium azide, pH 7.3.
Concentration:	lot specific
Purification:	Affinity Purified
Conjugation:	Unconjugated
Storage:	Store at 4°C short term. Aliquot and store at -20°C long term. Avoid freeze/thaw cycles.
Stability:	1 year
Predicted Protein Size:	Observed MW (kDa):16
Database Link:	Q9ULZ1
Background:	Swiss-Prot Acc.Q9ULZ1.



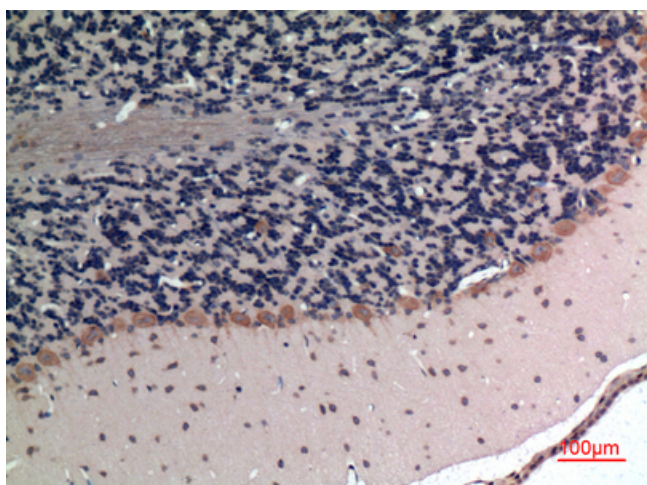
[View online »](#)

Product images:

Immunohistochemistry analysis of paraffin-embedded rat brain using Apelin antibody. High-pressure and temperature Sodium Citrate pH 6.0 was used for antigen retrieval.



Immunohistochemical analysis of paraffin-embedded Human tonsils using Apelin antibody. High-pressure and temperature Sodium Citrate pH 6.0 was used for antigen retrieval.



Immunohistochemistry analysis of paraffin-embedded rat brain using Apelin antibody. High-pressure and temperature Sodium Citrate pH 6.0 was used for antigen retrieval.