

Product datasheet for **TA383735**

APE1 (APEX1) Rabbit Polyclonal Antibody

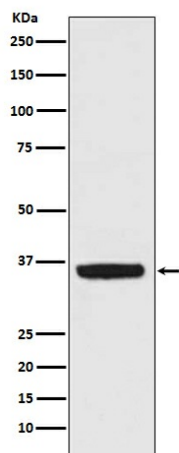
Product data:

Product Type:	Primary Antibodies
Applications:	IHC, WB
Recommended Dilution:	WB: 1/1000-1/5000 IHC: 1/50-1/200
Reactivity:	Human, Mouse, Rat
Host:	Rabbit
Isotype:	IgG
Clonality:	Polyclonal
Immunogen:	A synthesized peptide derived from human APE1
Formulation:	Rabbit IgG in phosphate buffered saline , pH 7.4, 150mM NaCl, 0.02% sodium azide and 50% glycerol.
Concentration:	lot specific
Purification:	Affinity Chromatography
Conjugation:	Unconjugated
Storage:	Store at 4°C short term. Aliquot and store at -20°C long term. Avoid freeze/thaw cycles.
Stability:	1 year
Predicted Protein Size:	36kDa
Gene Name:	apurinic/aprimidinic endodeoxyribonuclease 1
Database Link:	Entrez Gene 328 Human P27695
Background:	Swiss-Prot Acc.P27695.Ape1 initiates the repair of abasic sites and is essential for the base excision repair (BER) pathway. Repair activities of Ape1 are stimulated by interaction with XRCC1, another essential protein in BER. Ape1 functions as a redox factor that maintains transcription factors in an active, reduced state but can also function in a redox-independent manner as a transcriptional cofactor to control different cellular fates such as apoptosis, proliferation and differentiation.
Synonyms:	APE; APE-1; APE1; APEN; APEX; APX; HAP1; REF-1; REF1



[View online »](#)

Product images:



Western blot analysis of APE1 in K562 lysates using APE1 antibody.