

Product datasheet for **TA383734S**

AP3M1 Rabbit Monoclonal Antibody [Clone ID: R08-8D2]

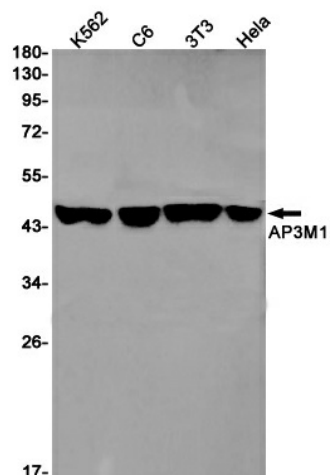
Product data:

Product Type:	Primary Antibodies
Clone Name:	R08-8D2
Applications:	WB
Recommended Dilution:	WB: 1/1000
Reactivity:	Human, Mouse, Rat
Host:	Rabbit
Isotype:	IgG
Clonality:	Monoclonal
Immunogen:	A synthetic peptide of human AP3M1
Formulation:	50mM Tris-Glycine(pH 7.4), 0.15M NaCl, 40% Glycerol, 0.01% Sodium azide and 0.05% BSA
Concentration:	lot specific
Purification:	Affinity Purified
Conjugation:	Unconjugated
Storage:	Store at 4°C short term. Aliquot and store at -20°C long term. Avoid freeze/thaw cycles.
Stability:	1 year
Predicted Protein Size:	Calculated MW: 47 kDa; Observed MW: 47 kDa
Gene Name:	adaptor related protein complex 3 mu 1 subunit
Database Link:	Entrez Gene 26985 Human Q9Y2T2
Background:	Swiss-Prot Acc.Q9Y2T2.Part of the AP-3 complex, an adaptor-related complex which is not clathrin-associated. The complex is associated with the Golgi region as well as more peripheral structures. It facilitates the budding of vesicles from the Golgi membrane and may be directly involved in trafficking to lysosomes. In concert with the BLOC-1 complex, AP-3 is required to target cargos into vesicles assembled at cell bodies for delivery into neurites and nerve terminals.
Synonyms:	MGC22164; Mu3A-adaptin; OTTHUMP00000019860



[View online »](#)

Product images:



Western blot analysis of AP3M1 in K562, C6, 3T3, HeLa lysates using AP3M1 antibody.