

## Product datasheet for **TA383731S**

### Annexin VI (ANXA6) Rabbit Monoclonal Antibody [Clone ID: R07-7G6]

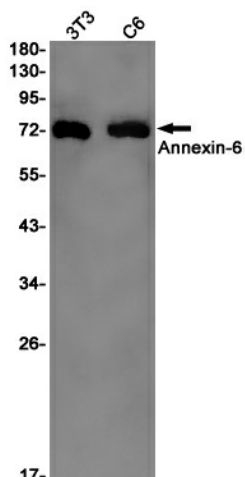
#### Product data:

Product Type:	Primary Antibodies
Clone Name:	R07-7G6
Applications:	IHC, IP, WB
Recommended Dilution:	WB: 1/1000 IHC: 1/200 IP: 1/20
Reactivity:	Human, Mouse, Rat
Host:	Rabbit
Isotype:	IgG
Clonality:	Monoclonal
Immunogen:	Recombinant protein of human Annexin-6
Formulation:	50mM Tris-Glycine(pH 7.4), 0.15M NaCl, 40% Glycerol, 0.01% Sodium azide and 0.05% BSA
Concentration:	lot specific
Purification:	Affinity Purified
Conjugation:	Unconjugated
Storage:	Store at 4°C short term. Aliquot and store at -20°C long term. Avoid freeze/thaw cycles.
Stability:	1 year
Predicted Protein Size:	Calculated MW: 76 kDa; Observed MW: 70 kDa
Gene Name:	annexin A6
Database Link:	<a href="#">Entrez Gene 309 Human P08133</a>
Background:	Swiss-Prot Acc.P08133.May associate with CD21. May regulate the release of Ca <sup>2+</sup> from intracellular stores.MiscellaneousSeems to bind one calcium ion with high affinity.
Synonyms:	Annexin-6; ANX6; calelectrin; Calphobindin-II; CBP68; Chromobindin-20; CPB-II; p68; p70

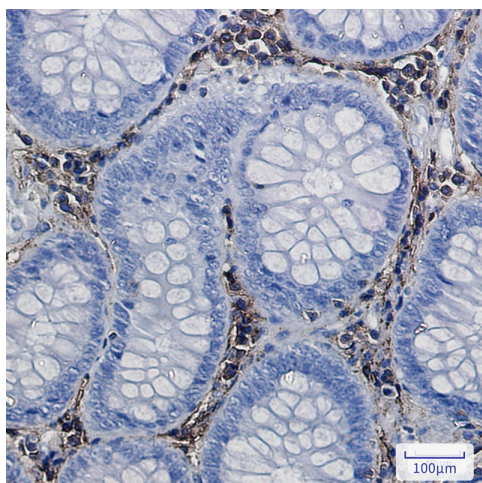


[View online »](#)

## Product images:



Western blot analysis of Annexin6 in 3T3, C6 lysates using Annexin VI antibody.



Immunohistochemistry analysis of paraffin-embedded Human colon cancer using Annexin VI antibody. High-pressure and temperature Sodium Citrate pH 6.0 was used for antigen retrieval.