

Product datasheet for **TA383730S**

Annexin VI (ANXA6) Rabbit Monoclonal Antibody [Clone ID: R03-1B7]

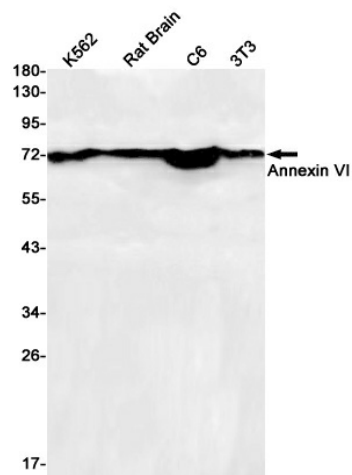
Product data:

| | |
|-------------------------|--|
| Product Type: | Primary Antibodies |
| Clone Name: | R03-1B7 |
| Applications: | IF, WB |
| Recommended Dilution: | WB: 1/1000 ICC/IF: 1/20 |
| Reactivity: | Human, Mouse, Rat |
| Host: | Rabbit |
| Isotype: | IgG |
| Clonality: | Monoclonal |
| Immunogen: | Recombinant protein of human Annexin VI |
| Formulation: | 50mM Tris-Glycine(pH 7.4), 0.15M NaCl, 40% Glycerol, 0.01% Sodium azide and 0.05% BSA |
| Concentration: | lot specific |
| Purification: | Affinity Purified |
| Conjugation: | Unconjugated |
| Storage: | Store at 4°C short term. Aliquot and store at -20°C long term. Avoid freeze/thaw cycles. |
| Stability: | 1 year |
| Predicted Protein Size: | Calculated MW: 76 kDa; Observed MW: 70 kDa |
| Gene Name: | annexin A6 |
| Database Link: | Entrez Gene 309 Human P08133 |
| Background: | Swiss-Prot Acc.P08133.May associate with CD21. May regulate the release of Ca ²⁺ from intracellular stores.MiscellaneousSeems to bind one calcium ion with high affinity. |
| Synonyms: | Annexin-6; ANX6; calelectrin; Calphobindin-II; CBP68; Chromobindin-20; CPB-II; p68; p70 |

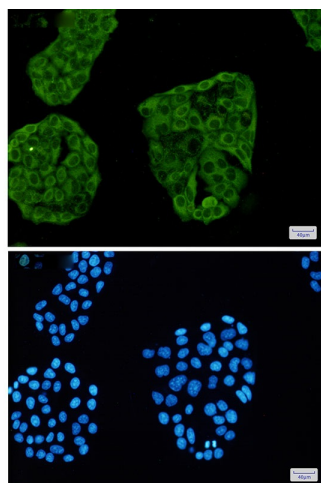


[View online »](#)

Product images:



Western blot analysis of Annexin VI in K562, rat Brain, C6, 3T3 lysates using Annexin VI antibody.



Immunocytochemistry analysis of Annexin VI (green) in HeLa using Annexin VI antibody, and DAPI (blue)