

## Product datasheet for **TA383730M**

### Annexin VI (ANXA6) Rabbit Monoclonal Antibody [Clone ID: R03-1B7]

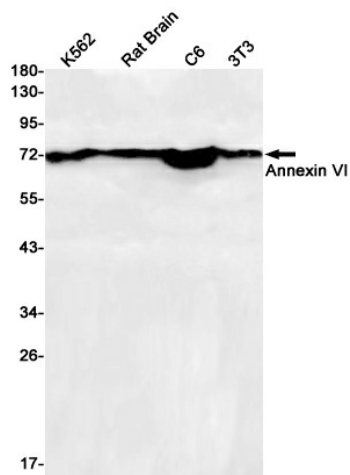
#### Product data:

Product Type:	Primary Antibodies
Clone Name:	R03-1B7
Applications:	IF, WB
Recommended Dilution:	WB: 1/1000 ICC/IF: 1/20
Reactivity:	Human, Mouse, Rat
Host:	Rabbit
Isotype:	IgG
Clonality:	Monoclonal
Immunogen:	Recombinant protein of human Annexin VI
Formulation:	50mM Tris-Glycine(pH 7.4), 0.15M NaCl, 40% Glycerol, 0.01% Sodium azide and 0.05% BSA
Concentration:	lot specific
Purification:	Affinity Purified
Conjugation:	Unconjugated
Storage:	Store at 4°C short term. Aliquot and store at -20°C long term. Avoid freeze/thaw cycles.
Stability:	1 year
Predicted Protein Size:	Calculated MW: 76 kDa; Observed MW: 70 kDa
Gene Name:	annexin A6
Database Link:	<a href="#">Entrez Gene 309 Human P08133</a>
Background:	Swiss-Prot Acc.P08133.May associate with CD21. May regulate the release of Ca <sup>2+</sup> from intracellular stores.MiscellaneousSeems to bind one calcium ion with high affinity.
Synonyms:	Annexin-6; ANX6; calelectrin; Calphobindin-II; CBP68; Chromobindin-20; CPB-II; p68; p70

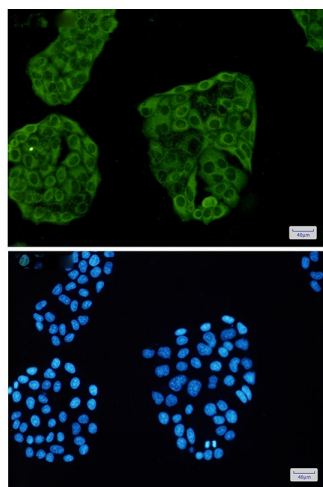


[View online »](#)

## Product images:



Western blot analysis of Annexin VI in K562, rat Brain, C6, 3T3 lysates using Annexin VI antibody.



Immunocytochemistry analysis of Annexin VI (green) in HeLa using Annexin VI antibody, and DAPI (blue)