

Product datasheet for **TA383726M**

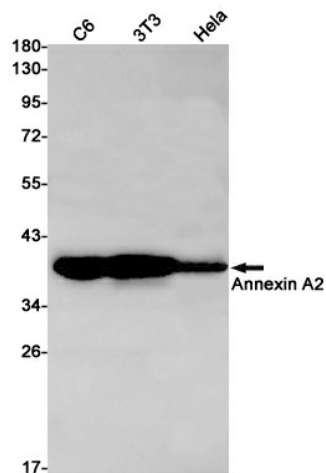
Annexin A2 (ANXA2) Rabbit Monoclonal Antibody [Clone ID: R09-5C1]

Product data:

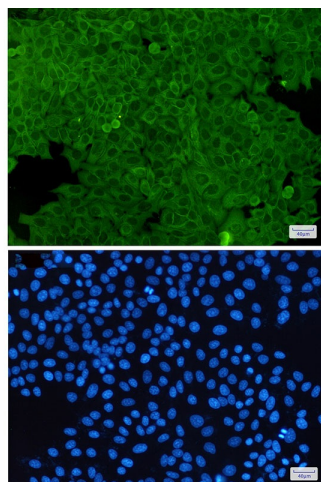
Product Type:	Primary Antibodies
Clone Name:	R09-5C1
Applications:	IF, WB
Recommended Dilution:	WB: 1/1000 ICC/IF: 1/50
Reactivity:	Human, Mouse, Rat
Host:	Rabbit
Isotype:	IgG
Clonality:	Monoclonal
Immunogen:	A synthetic peptide of human Annexin A2
Formulation:	50mM Tris-Glycine(pH 7.4), 0.15M NaCl, 40% Glycerol, 0.01% Sodium azide and 0.05% BSA
Concentration:	lot specific
Purification:	Affinity Purified
Conjugation:	Unconjugated
Storage:	Store at 4°C short term. Aliquot and store at -20°C long term. Avoid freeze/thaw cycles.
Stability:	1 year
Predicted Protein Size:	Calculated MW: 39 kDa; Observed MW: 38 kDa
Gene Name:	annexin A2
Database Link:	Entrez Gene 302 Human P07355
Background:	Swiss-Prot Acc.P07355.Calcium-regulated membrane-binding protein whose affinity for calcium is greatly enhanced by anionic phospholipids. It binds two calcium ions with high affinity. May be involved in heat-stress response. Inhibits PCSK9-enhanced LDLR degradation, probably reduces PCSK9 protein levels via a translational mechanism but also competes with LDLR for binding with PCSK9 (PubMed:18799458, PubMed:24808179, PubMed:22848640).
Synonyms:	Annexin-2; ANX2; ANX2L4; CAL1H; Chromobindin-8; LIP2; LPC2; LPC2D; P36; PAP-IV


[View online »](#)

Product images:



Western blot analysis of Annexin A2 in C6, 3T3, HeLa lysates using Annexin A2 antibody.



Immunocytochemistry analysis of Annexin A2(green) in HeLa using Annexin A2 antibody, and DAPI(blue)