

Product datasheet for **TA383725**

Annexin A2 (ANXA2) Rabbit Polyclonal Antibody

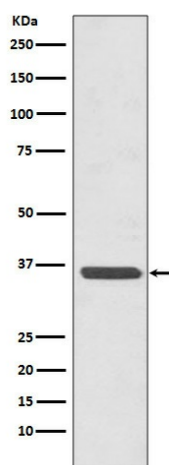
Product data:

Product Type:	Primary Antibodies
Applications:	FC, IF, IHC, WB
Recommended Dilution:	WB: 1/500-1/2000 IHC: 1/50-1/200 ICC/IF: 1/50-1/200 FC: 1/50
Reactivity:	Human, Mouse, Rat
Host:	Rabbit
Isotype:	IgG
Clonality:	Polyclonal
Immunogen:	A synthesized peptide derived from human Annexin A2
Formulation:	Rabbit IgG in phosphate buffered saline , pH 7.4, 150mM NaCl, 0.02% sodium azide and 50% glycerol.
Concentration:	lot specific
Purification:	Affinity Chromatography
Conjugation:	Unconjugated
Storage:	Store at 4°C short term. Aliquot and store at -20°C long term. Avoid freeze/thaw cycles.
Stability:	1 year
Predicted Protein Size:	38kDa
Gene Name:	annexin A2
Database Link:	Entrez Gene 302 Human P07355
Background:	Swiss-Prot Acc.P07355.Originally identified as a protein inhibitor of phospholipase A2, annexin A2 has subsequently been shown to interact with an array of protein and non-protein partners, including F-actin, spectrin, SNARE complexes, RNA, and virus particles.
Synonyms:	Annexin-2; ANX2; ANX2L4; CAL1H; Chromobindin-8; LIP2; LPC2; LPC2D; P36; PAP-IV



[View online »](#)

Product images:



Western blot analysis of Annexin A2 in HeLa lysates using Annexin A2 antibody.