

Product datasheet for **TA383723**

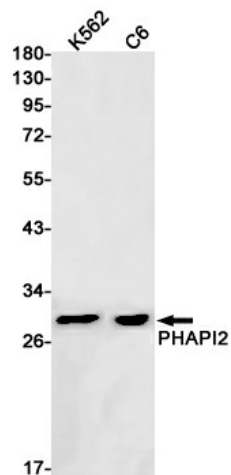
PHAPI2 / APRIL (ANP32B) Rabbit Monoclonal Antibody [Clone ID: R03-6H2]

Product data:

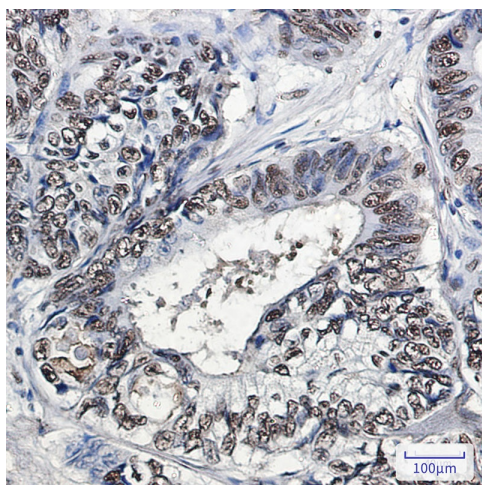
Product Type:	Primary Antibodies
Clone Name:	R03-6H2
Applications:	IF, IHC, WB
Recommended Dilution:	WB: 1/1000 IHC: 1/20 ICC/IF: 1/50
Reactivity:	Human, Rat
Host:	Rabbit
Isotype:	IgG
Clonality:	Monoclonal
Immunogen:	A synthetic peptide of human PHAPI2
Formulation:	50mM Tris-Glycine(pH 7.4), 0.15M NaCl, 40% Glycerol, 0.01% Sodium azide and 0.05% BSA
Concentration:	lot specific
Purification:	Affinity Purified
Conjugation:	Unconjugated
Storage:	Store at 4°C short term. Aliquot and store at -20°C long term. Avoid freeze/thaw cycles.
Stability:	1 year
Predicted Protein Size:	Calculated MW: 29 kDa; Observed MW: 29 kDa
Gene Name:	acidic nuclear phosphoprotein 32 family member B
Database Link:	Entrez Gene 10541 Human Q92688
Background:	Swiss-Prot Acc.Q92688.Multifunctional protein working as a cell cycle progression factor as well as a cell survival factor. Required for the progression from the G1 to the S phase. Anti-apoptotic protein which functions as a caspase-3 inhibitor. Has no phosphatase 2A (PP2A) inhibitor activity . Exhibits histone chaperone properties, stimulating core histones to assemble into a nucleosome.
Synonyms:	APRIL; PHAPI2; SSP29



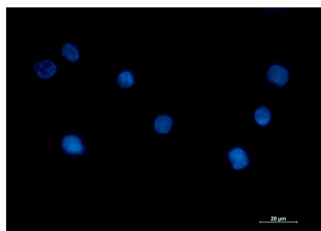
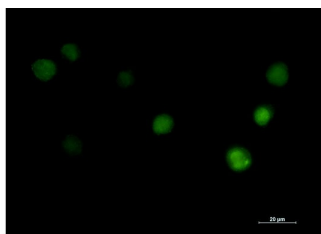
[View online »](#)

Product images:

Western blot analysis of PHAPI2 in K562, C6 lysates using PHAPI2 antibody.



Immunohistochemistry analysis of paraffin-embedded Human colon cancer tissue using PHAPI2/APRIL antibody. High-pressure and temperature Sodium Citrate pH 6.0 was used for antigen retrieval.



Immunocytochemistry analysis of PHAPI2 (green) in K562 using PHAPI2 antibody, and DAPI (blue).