

Product datasheet for **TA383719M**

Angiopoietin 1 (ANGPT1) Rabbit Polyclonal Antibody

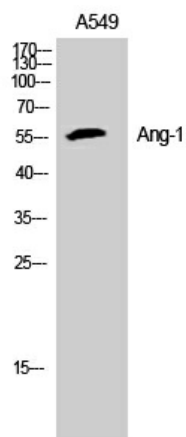
Product data:

Product Type:	Primary Antibodies
Applications:	ELISA, IHC, WB
Recommended Dilution:	WB: 1/500-1/2000 IHC-p: 1/100-1/300 ELISA: 1/20000
Reactivity:	Human, Rat
Host:	Rabbit
Isotype:	IgG
Clonality:	Polyclonal
Immunogen:	The antiserum was produced against synthesized peptide derived from the N-terminal region of human ANGPT1. AA range:1-50
Formulation:	Liquid in PBS containing 50% glycerol, 0.5% BSA and 0.02% sodium azide, pH 7.3.
Concentration:	lot specific
Purification:	Affinity Purified
Conjugation:	Unconjugated
Storage:	Store at 4°C short term. Aliquot and store at -20°C long term. Avoid freeze/thaw cycles.
Stability:	1 year
Predicted Protein Size:	Observed MW (kDa):57
Gene Name:	angiopoietin 1
Database Link:	Entrez Gene 284 Human Q15389
Background:	Swiss-Prot Acc.Q15389.
Synonyms:	AGP1; AGPT; ANG-1; ANG1; KIAA0003

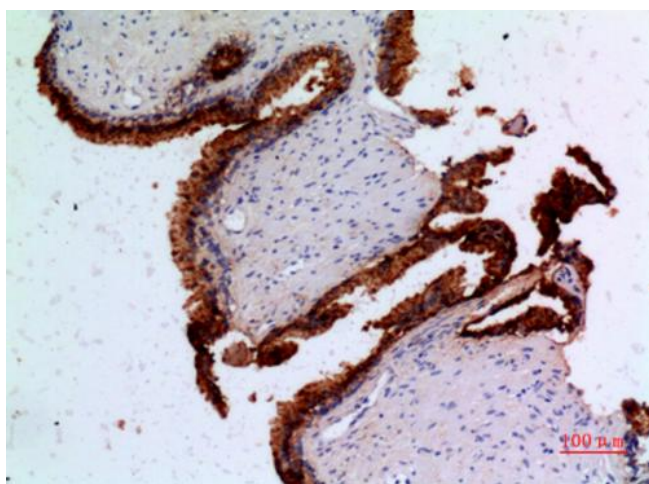


[View online »](#)

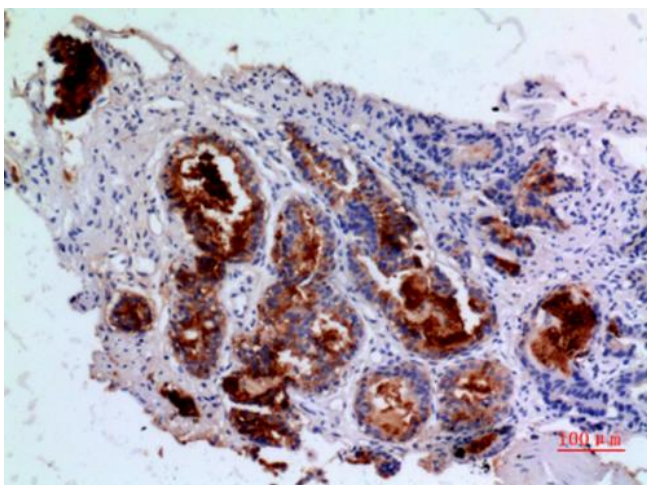
Product images:



Western blot analysis of Angiopoietin 1 in A549, K562 lysates using Angiopoietin 1 antibody.



Immunohistochemistry analysis of paraffin-embedded Human prostatic cancer using Angiopoietin 1 antibody. High-pressure and temperature Sodium Citrate pH 6.0 was used for antigen retrieval.



Immunohistochemistry analysis of paraffin-embedded Human prostatic cancer using Angiopoietin 1 antibody. High-pressure and temperature Sodium Citrate pH 6.0 was used for antigen retrieval.