

## Product datasheet for **TA383718**

### AMBN Rabbit Polyclonal Antibody

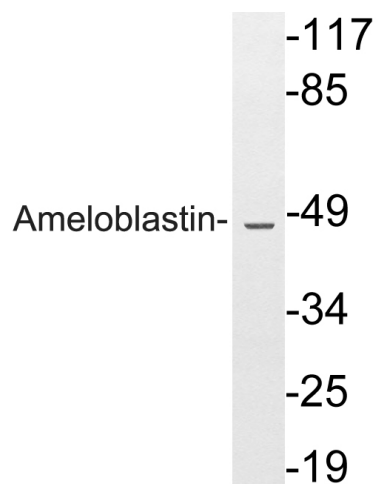
#### Product data:

|                         |   |
|-------------------------|---|
| Product Type:           | Primary Antibodies  |
| Applications:           | ELISA, WB   |
| Recommended Dilution:   | WB: 1/500-1/2000<br>ELISA: 1/10000  |
| Reactivity:             | Human   |
| Host:                   | Rabbit  |
| Isotype:                | IgG   |
| Clonality:              | Polyclonal  |
| Immunogen:              | The antiserum was produced against synthesized peptide derived from human Ameloblastin.<br>AA range:275-324 |
| Formulation:            | Liquid in PBS containing 50% glycerol, 0.5% BSA and 0.02% sodium azide, pH 7.3.                             |
| Concentration:          | lot specific  |
| Purification:           | Affinity Chromatography   |
| Conjugation:            | Unconjugated  |
| Storage:                | Store at 4°C short term. Aliquot and store at -20°C long term. Avoid freeze/thaw cycles.                    |
| Stability:              | 1 year  |
| Predicted Protein Size: | Observed MW (kDa):48  |
| Database Link:          | <a href="#">Q9NP70</a>  |
| Background:             | Swiss-Prot Acc.Q9NP70.Involved in the mineralization and structural organization of enamel.                 |



[View online »](#)

Product images:



Western blot analysis of AMBN in HeLa lysates using Ameloblastin antibody.