

## Product datasheet for **TA383717**

### Alkaline Phosphatase (ALPP) Rabbit Polyclonal Antibody

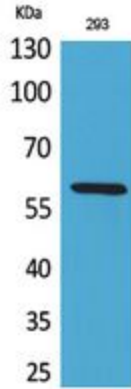
#### Product data:

Product Type:	Primary Antibodies
Applications:	ELISA, WB
Recommended Dilution:	WB: 1/500-1/2000 ELISA: 1/20000
Reactivity:	Human, Mouse
Host:	Rabbit
Isotype:	IgG
Clonality:	Polyclonal
Immunogen:	The antiserum was produced against synthesized peptide derived from the N-terminal region of human ALPP/ALPPL2. AA range:1-50
Formulation:	Liquid in PBS containing 50% glycerol, 0.5% BSA and 0.02% sodium azide, pH 7.3.
Concentration:	lot specific
Purification:	Affinity Purified
Conjugation:	Unconjugated
Storage:	Store at 4°C short term. Aliquot and store at -20°C long term. Avoid freeze/thaw cycles.
Stability:	1 year
Predicted Protein Size:	Observed MW (kDa):60
Gene Name:	alkaline phosphatase, placental
Database Link:	<a href="#">Entrez Gene 250 Human P05187</a>
Background:	Swiss-Prot Acc.P05187/P10696.
Synonyms:	ALP; FLJ61142; glycerophosphatase; PALP; PLAP; PLAP-1

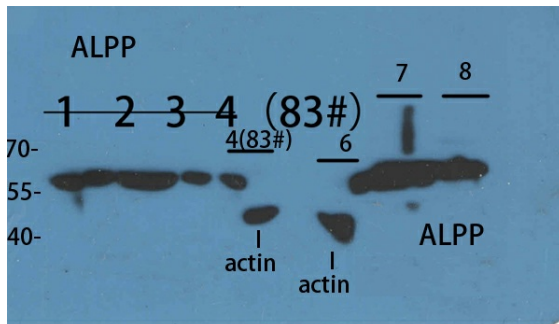


[View online »](#)

Product images:



Western blot analysis of Placental Alkaline Phosphatase in 293 lysates using Placental Alkaline Phosphatase antibody.



Western blot analysis of Placental Alkaline Phosphatase in lysates using ALPP/ALPPL2 antibody.

- 1 2 3 4 customer's cell
- 6 293T
- 7 HeLa
- 8 K562