

Product datasheet for **TA383716S**

Alkaline Phosphatase (ALPP) Rabbit Monoclonal Antibody [Clone ID: R01-8I3]

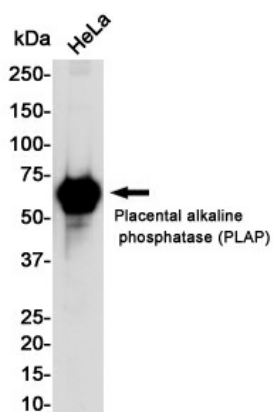
Product data:

Product Type:	Primary Antibodies
Clone Name:	R01-8I3
Applications:	WB
Recommended Dilution:	WB: 1/2000
Reactivity:	Human
Host:	Rabbit
Isotype:	IgG
Clonality:	Monoclonal
Immunogen:	A synthetic peptide of human Placental alkaline phosphatase (phospho LAP)
Formulation:	50mM Tris-Glycine(pH 7.4), 0.15M NaCl, 40% Glycerol, 0.01% Sodium azide and 0.05% BSA
Concentration:	lot specific
Purification:	Affinity Purified
Conjugation:	Unconjugated
Storage:	Store at 4°C short term. Aliquot and store at -20°C long term. Avoid freeze/thaw cycles.
Stability:	1 year
Predicted Protein Size:	Calculated MW: 58 kDa; Observed MW: 70 kDa
Gene Name:	alkaline phosphatase, placental
Database Link:	Entrez Gene 250 Human P05187
Background:	Swiss-Prot Acc.P05187.MiscellaneousIn most mammals there are four different isozymes: placental, germ cell, inTinal and tissue non-specific (liver/bone/kidney).
Synonyms:	ALP; FLJ61142; glycerophosphatase; PALP; PLAP; PLAP-1

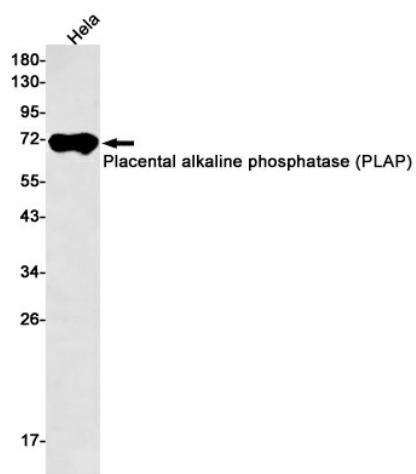


[View online »](#)

Product images:



Western blot analysis of Placental alkaline phosphatase (Phospho-LAP) in HeLa lysates using Placental Alkaline Phosphatase antibody.



Western blot analysis of Placental alkaline phosphatase (PLAP) in HeLa lysates using Placental alkaline phosphatase (PLAP) antibody.