

Product datasheet for **TA383715**

Alkaline Phosphatase (ALPP) Rabbit Polyclonal Antibody

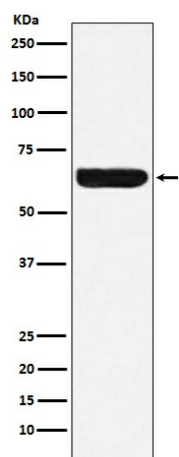
Product data:

Product Type:	Primary Antibodies
Applications:	IF, IHC, WB
Recommended Dilution:	WB: 1/1000-1/5000 IHC: 1/50-1/200 ICC/IF: 1/50-1/200
Reactivity:	Human
Host:	Rabbit
Isotype:	IgG
Clonality:	Polyclonal
Immunogen:	A synthesized peptide derived from human Placental alkaline phosphatase (PLAP)
Formulation:	Rabbit IgG in phosphate buffered saline , pH 7.4, 150mM NaCl, 0.02% sodium azide and 50% glycerol.
Concentration:	lot specific
Purification:	Affinity Chromatography
Conjugation:	Unconjugated
Storage:	Store at 4°C short term. Aliquot and store at -20°C long term. Avoid freeze/thaw cycles.
Stability:	1 year
Predicted Protein Size:	70kDa
Gene Name:	alkaline phosphatase, placental
Database Link:	Entrez Gene 250 Human P05187
Background:	Swiss-Prot Acc.P05187.PLAP may assist in guiding migratory cells and transporting specific molecules, such as fatty acids and immunoglobulins, across the plasma membrane. The three tissue-specific APs identified in human, PLAP, germ cell AP (GCAP) and inTinal AP, are 90-98% homologous and their genes are clustered on chromosome 2q.
Synonyms:	ALP; FLJ61142; glycerophosphatase; PALP; PLAP; PLAP-1



[View online »](#)

Product images:



Western blot analysis of Placental alkaline phosphatase (PLAP) in HeLa lysates using Placental Alkaline Phosphatase antibody.