

Product datasheet for **TA383714M**

Alkaline Phosphatase (ALPL) Rabbit Polyclonal Antibody

Product data:

Product Type:	Primary Antibodies
Applications:	FC, IF, IHC, IP, WB
Recommended Dilution:	WB: 1/1000 IHC: 1/50-1/200 ICC/IF: 1/50-1/100 IP: 1/50 FC: 1/50
Reactivity:	Human, Mouse, Rat
Host:	Rabbit
Isotype:	IgG
Clonality:	Polyclonal
Immunogen:	A synthesized peptide derived from human Alkaline Phosphatase
Formulation:	Rabbit IgG in phosphate buffered saline , pH 7.4, 150mM NaCl, 0.02% sodium azide and 50% glycerol.
Concentration:	lot specific
Purification:	Affinity Chromatography
Conjugation:	Unconjugated
Storage:	Store at 4°C short term. Aliquot and store at -20°C long term. Avoid freeze/thaw cycles.
Stability:	1 year
Predicted Protein Size:	57kDa
Gene Name:	alkaline phosphatase, liver/bone/kidney
Database Link:	Entrez Gene 249 Human P05186



[View online »](#)

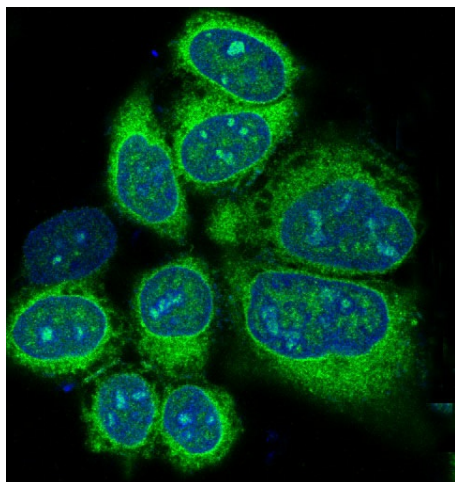
Background:

Swiss-Prot Acc.P05186. There are at least four distinct but related alkaline phosphatases: intestinal, placental, placental-like, and liver/bone/kidney (tissue non-specific). The first three are located together on chromosome 2, while the tissue non-specific form is located on chromosome 1. The product of this gene is a membrane bound glycosylated enzyme that is not expressed in any particular tissue and is, therefore, referred to as the tissue-nonspecific form of the enzyme.

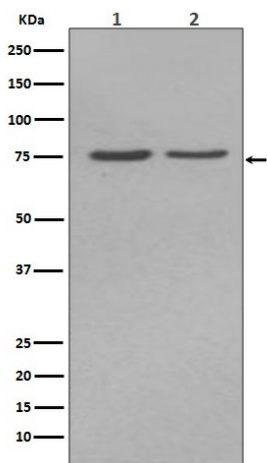
Synonyms:

AP-TNAP; FLJ40094; FLJ93059; glycerophosphatase; HOPS; MGC161443; MGC167935; OTTHUMP00000002972; TNAP; TNSALP

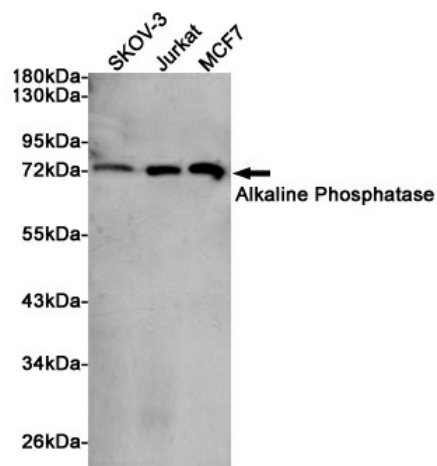
Product images:



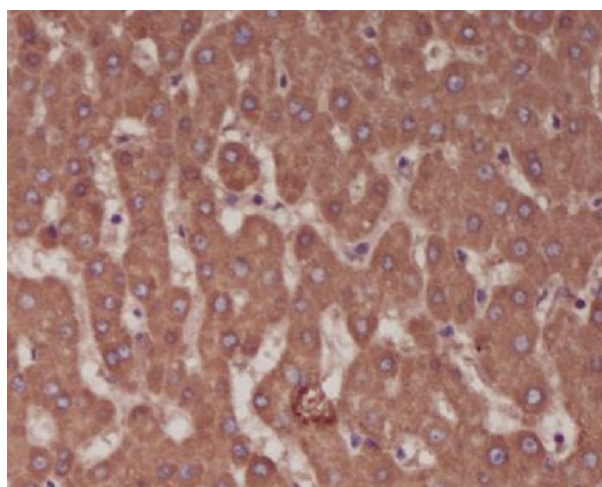
Immunofluorescent analysis of HeLa cells, using Alkaline Phosphatase Antibody .



Western blot analysis of Alkaline Phosphatase in (1) HepG2 lysates; (2) JAR lysates using Alkaline Phosphatase antibody.



Western blot analysis of extracts from SKOV-3, Jurkat and MCF7 cells using Alkaline Phosphatase Rabbit pAb at 1:1000 dilution. Predicted band size: 57kDa. Observed band size: 70kDa.



Immunohistochemical analysis of paraffin-embedded human liver, using Alkaline Phosphatase Antibody.