

Product datasheet for **TA383710**

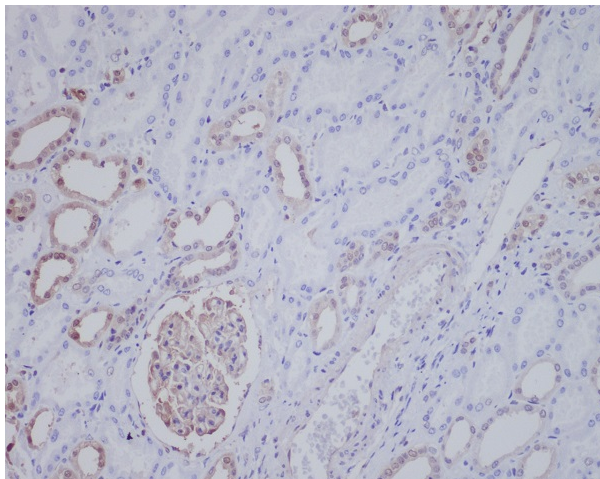
Nucleophosmin (NPM1) Rabbit Polyclonal Antibody

Product data:

Product Type:	Primary Antibodies
Applications:	IF, IHC
Recommended Dilution:	IHC: 1/100-1/500 ICC/IF: 1/50-1/100
Reactivity:	Human, Mouse, Rat
Host:	Rabbit
Isotype:	IgG
Clonality:	Polyclonal
Immunogen:	A synthesized peptide derived from human ALK
Formulation:	Rabbit IgG in phosphate buffered saline , pH 7.4, 150mM NaCl, 0.02% sodium azide and 50% glycerol.
Concentration:	lot specific
Purification:	Affinity Chromatography
Conjugation:	Unconjugated
Storage:	Store at 4°C short term. Aliquot and store at -20°C long term. Avoid freeze/thaw cycles.
Stability:	1 year
Gene Name:	nucleophosmin (nucleolar phosphoprotein B23, numatrin)
Database Link:	Entrez Gene 4869 Human P06748
Background:	Involved in diverse cellular processes such as ribosome biogenesis, centrosome duplication, protein chaperoning, histone assembly, cell proliferation, and regulation of tumor suppressors p53/TP53 and ARF. Binds ribosome presumably to drive ribosome nuclear export. Associated with nucleolar ribonucleoprotein structures and bind single-stranded nucleic acids.
Synonyms:	B23; MGC104254; NPM; Numatrin



[View online »](#)

Product images:

Immunohistochemistry analysis of paraffin-embedded Human kidney using ALK antibody. High-pressure and temperature Sodium Citrate pH 6.0 was used for antigen retrieval.